



**Strathleven Road, Brixton, SW2**

1 bedroom flat - conversion for sale

**£330,000**

Leasehold

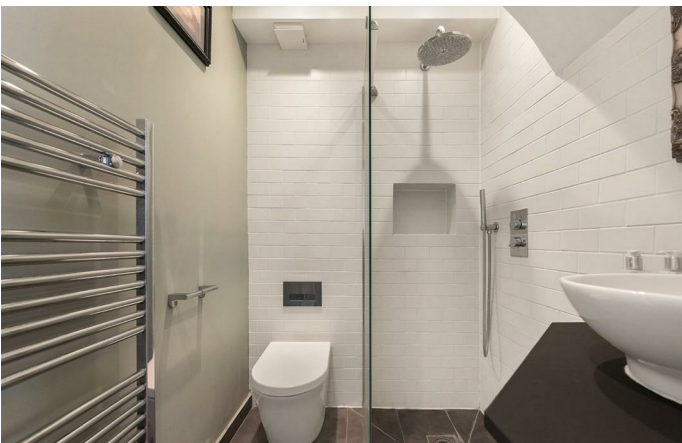
## Property Details

A sympathetic layout combined with high ceilings and characterful sash windows provides an elegant, light and airy feel throughout this appealing home. The bedroom is a fantastic size with built-in wardrobes and sits adjacent to a comfortable living room, ideal for entertaining, relaxing and unwinding. The separate kitchen maximises the space on offer and has all you need in terms of mod cons. The contemporary bathroom completes the property and is finished with tasteful fixtures and fittings. The flat benefits from a wrap-around patio at the front of the property which is ideal for green-fingered purchasers who can look to add some foliage to create some separation from the hustle and bustle of London living. The property is situated in a popular location and unlike a lot of similar conversions, the majority of the total square footage is useable living space, as opposed to being distributed within larger hallways.

Council tax band B      EPC rating C (70)

## Features

- One double bedroom
- Ground floor
- Victorian conversion
- Private front patio and own entrance
- Bright and airy throughout
- Highly sought-after location between Clapham and Brixton
- Victoria line minutes away
- Local amenities of Acre Lane
- Chain-free



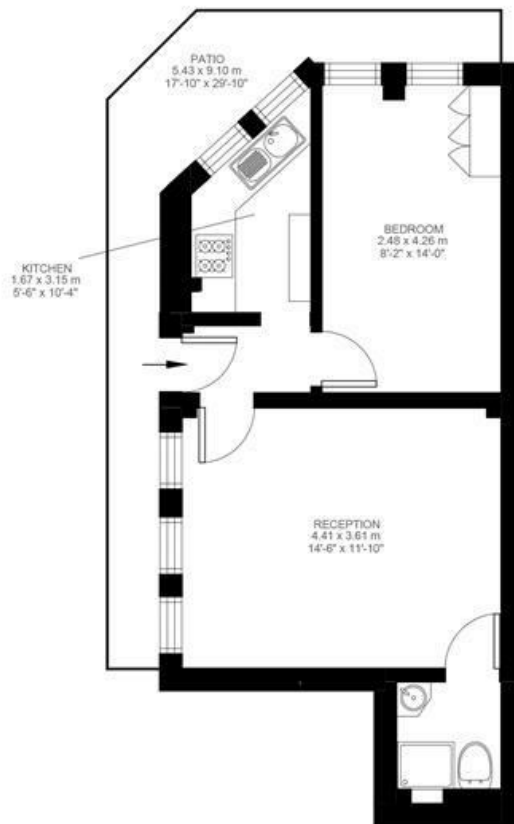


Strathleven Road, Brixton, SW2

**Strathleven Road, Brixton Hill, SW2**

**1 Bedroom Flat**

Approximate internal area: **404 sqft 37 sqm**



Ground Floor



While we do try our very best, floor plans are produced as a guide only and we take no responsibility for the precise accuracy with which any property is represented.

Strathleven Road, Brixton, SW2

