



Thurlow Park Road, Tulse Hill, SE21

2 bedroom flat to let

£360 Per Week

Furnished

Property Details

A two double bedroom, top floor flat located only moments from Tulse Hill station, which has fantastic travel routes straight into the City. The reception room has enough space for a dining table, there's a separate kitchen with plenty of storage, perfect for entertaining guests, two double bedrooms and a sleek, modern family bathroom. Thurlow Park Road is just a hop, skip and jump away from one of south London's most popular green spaces, Brockwell Park, known for its lido and surrounding pubs.

Features

- 2 bedrooms
- 1 reception
- 1 bathroom
- Bright and airy throughout
- Close to transport links
- Close to Brockwell Park

Council tax band C EPC rating D (61)



Thurlow Park Road, Tulse Hill, SE21

K

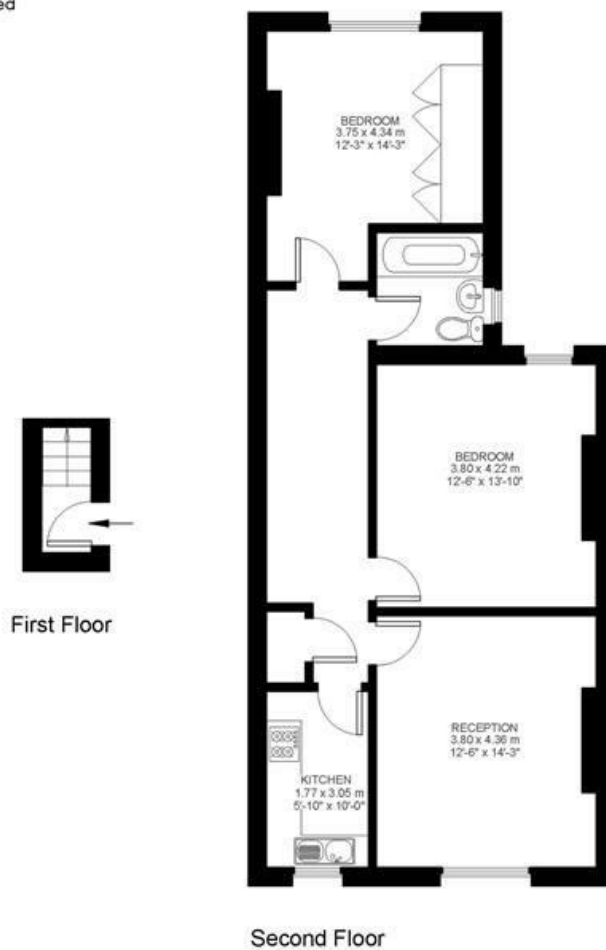
Thurlow Park Road

2 Bed flat

Approx internal area:

776 sqft 72 sqm

While we do try our very best, floor plans are produced as a guide only and we take no responsibility for the precise accuracy with which any property is represented



Thurlow Park Road, Tulse Hill, SE21

