

Concanon Road, London, SW2

3 bedroom flat to let

£630 Per Week

Furnished

Property Details

This is a lovely characterful split level flat in a prime location in the heart of Brixton. The property is a six minute walk to Brixton station, Brixton Village, the Ritzy and everything else that Brixton has to offer. On the first level we have the living room at the front of the property with hardwood flooring and lovely sash windows looking out onto the street below. The separate kitchen is spacious and modern with room for a dining table and chairs. Along the hallway is the family bathroom and W/C along with the first bedroom which is a decent sized double. Up the stairs we have the other two bedrooms which are both large doubles, making this flat perfect for professional sharers.

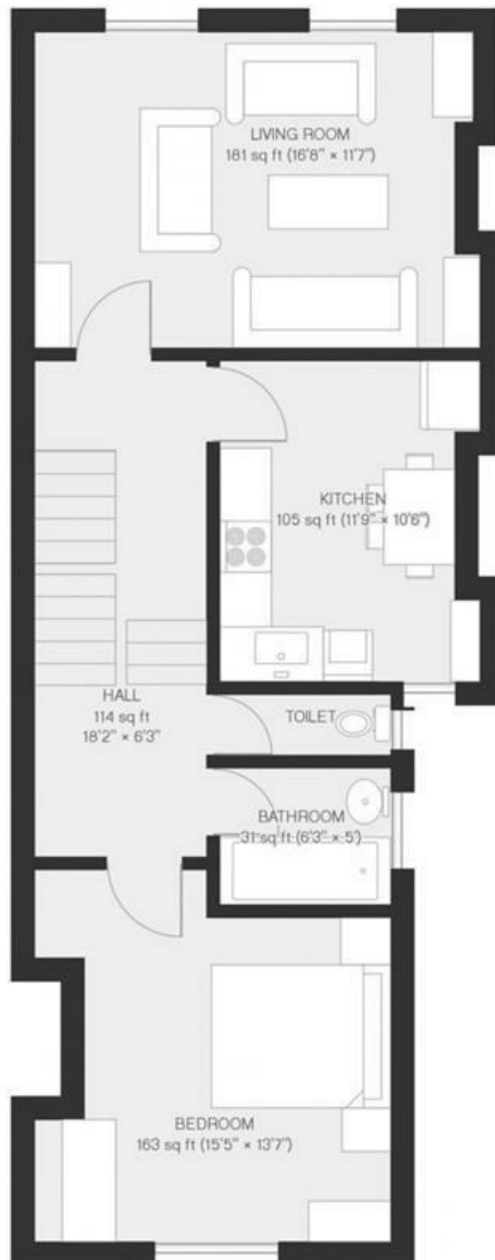
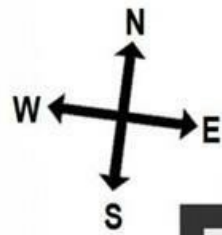
Council tax band D EPC rating D (65)

Features

- Three double bedroom
- Split level
- Victorian conversion
- Spacious throughout
- Bright and Airy
- Close to Transport links
- Close to Central Brixton

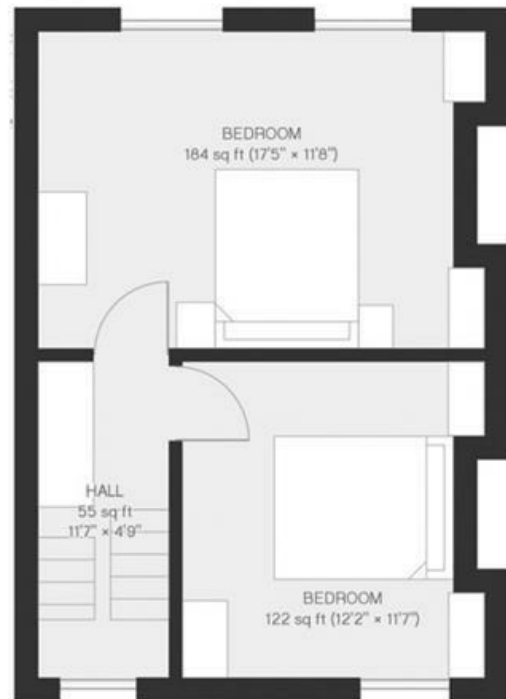


Concanon Road, London, SW2



First

Concanon Road



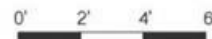
Second



3 bed Flat.

Approx internal area:

1015 sqft 94 sqm



While we do try our very best, floor plans are produced as a guide only and we take no responsibility for the precise accuracy with which any property is represented

Concanon Road, London, SW2

