



Lambert Road, London, SW2

1 bedroom flat to let

£365 Per Week

Furnished

Property Details

This is a delightful property on a popular street – perfectly laid out and feels instantly liveable, the moment you walk through the door. This first floor Victorian conversion flat has an open plan reception and kitchen area with views of the attractive period terrace row opposite and is flooded with natural light through the lovely bay window. The kitchen is sleek and modern, and there is space for a dining table as well as a sofa in the open plan reception room. The bathroom, like the rest of the property, is in excellent condition. The bedroom is a comfortable double room, quietly tucked away at the rear of this grand detached house. The icing on the cake is the large South-facing communal garden – a perfect sun trap for those summers in the city. Perfectly located within walking distance to both Brixton (a nine minute walk) and Clapham (a fifteen minute stroll), Lambert Road is an attractive and popular terraced street, just off Brixton Hill. Commuting will be simple, with access to a number of bus routes, the Victoria line at Brixton tube, as well as National Rail services. Brockwell Park is also a short walk from the property and the amenities in Herne Hill are a pleasant fourteen minute walk through the park.

Council tax band B **EPC rating C (75)**

Features

- Open plan living
- Victorian
- Communal gardens
- Bright and airy throughout
- Highly desirable road
- Close to Brockwell park

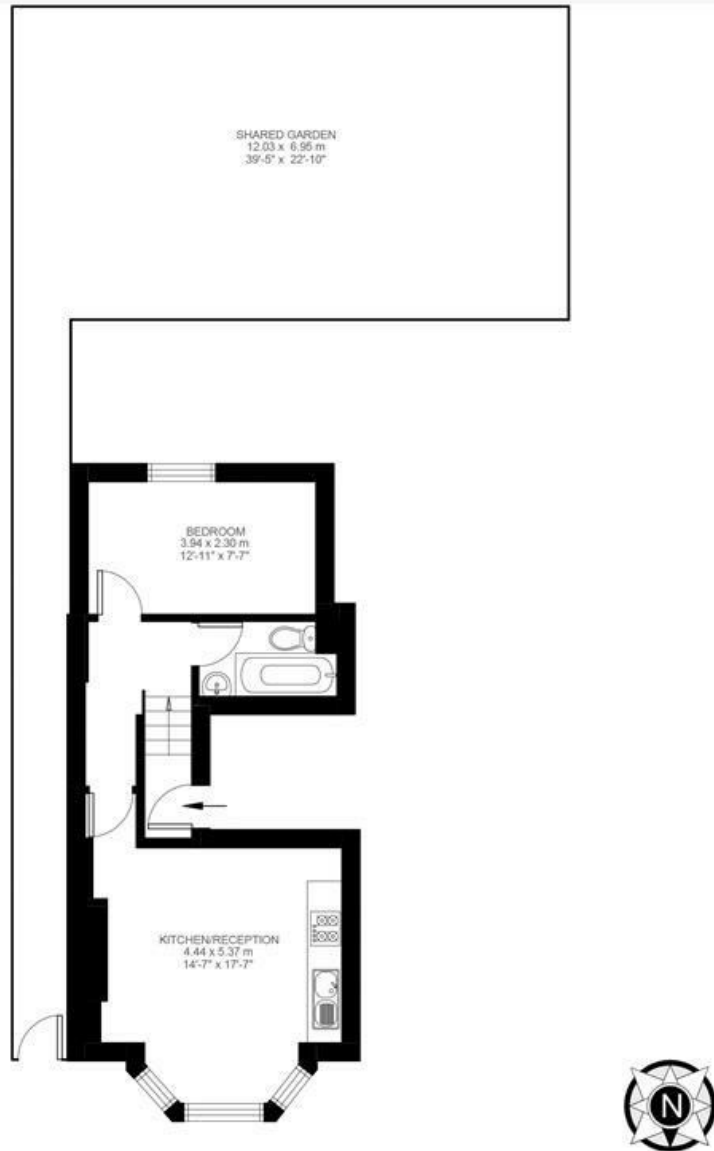


Lambert Road, London, SW2

Lambert Road, Brixton, SW2

1 Bedroom Flat

Approximate internal area: 410 sqft 38 sqm



First Floor



While we do try our very best, floor plans are produced as a guide only and we take no responsibility for the precise accuracy with which any property is represented.

Lambert Road, London, SW2

