



Dulwich Road, Herne Hill, SE24

1 bedroom flat for sale

£375,000

Leasehold

Property Details

A wonderfully spacious, one bedroom split level flat, nestled within the heart of Herne Hill, overlooking Brockwell Park. This well-presented, bright and airy property will appeal to a wide range of purchasers due to the overall square footage on offer, and its enviable location. A substantial reception room forms the heart of this home, with ample space for dining and a desk should the new purchaser require. Large sash windows allow natural light to flood the space whilst providing pleasant views over the park opposite. Leading off from the living area is a smart galley kitchen, fitted with trendy blue units and solid wooden worktops. The bathroom is modern, complete with stylish blue tiling. The bedroom is quietly tucked away on the top floor of the building, and benefits from an abundance of light from multiple skylights. A generous double, boasting fantastic built-in storage within the eaves. With almost 700 square feet of internal space, the flat offers great proportions, in line with many of the two bedroom flats in the area.

Features

- One double bedroom
- Nearly 700 square feet of internal space
- Split level
- Central location
- Opposite Brockwell Park
- Moments from Herne Hill station
- Brixton a fifteen minute walk away
- Fantastic first time purchase or rental investment
- Chain free

Council tax band B EPC rating D (67)

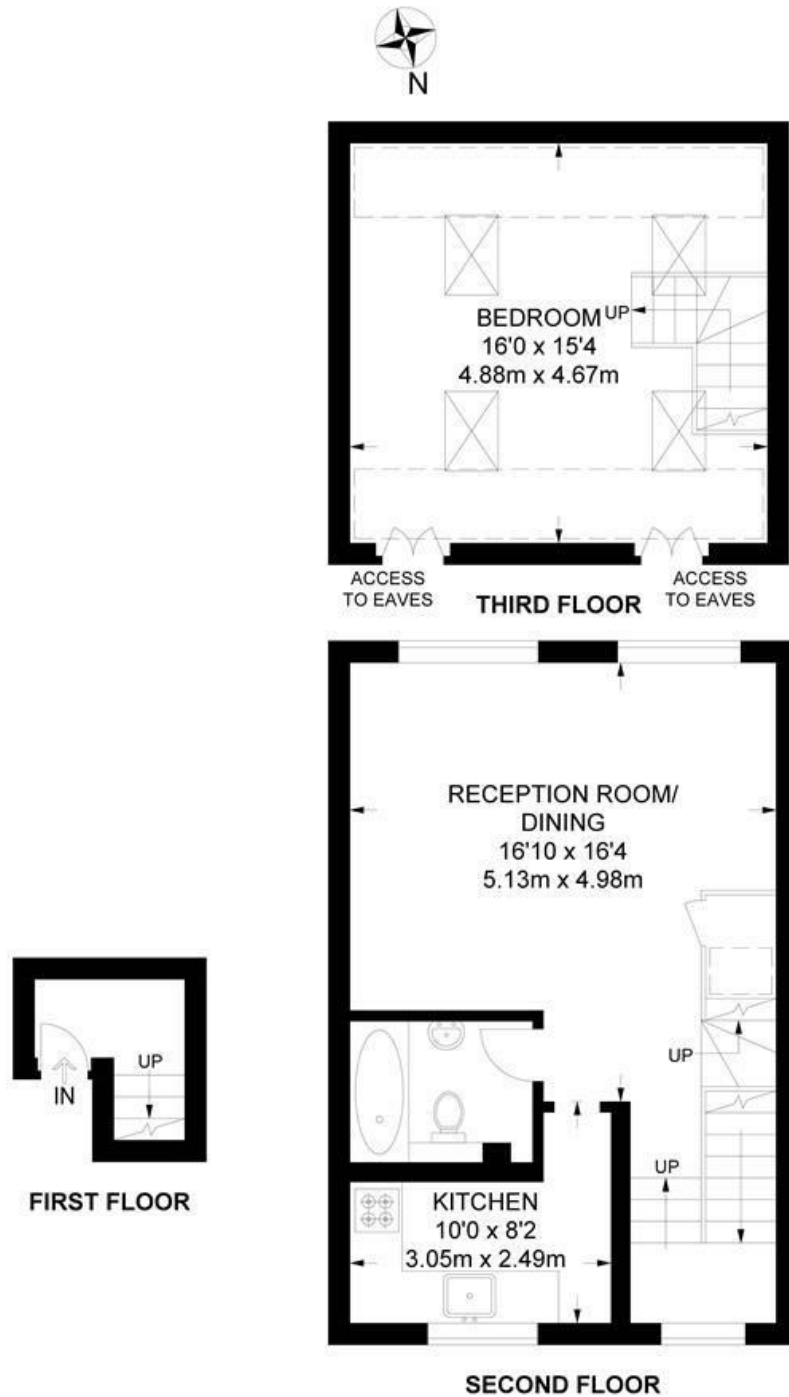


Dulwich Road, Herne Hill, SE24

Dulwich Road, SE24

1 Bedroom Flat

APPROXIMATE TOTAL INTERNAL AREA: 686 SQ FT / 63.7 SQ M



While we try our very best, floor plans are produced as a guide only and we take no responsibility for the precise accuracy with which any property is represented.

Dulwich Road, Herne Hill, SE24

