

Tremadoc Road, Clapham, SW4

2 bedroom flat - conversion for sale

£565,000

Share of Freehold

Property Details

A beautifully presented, two double bedroom apartment, perfectly positioned off Clapham High Street. The property has been extensively renovated throughout by the current owners. The open-plan reception room flows effortlessly through to the kitchen, allowing for a seamless transition from living to dining. There is also a separate utility room which provides a space for laundry, a brand new boiler plus some extra storage options. The two double bedrooms are located at different ends of the property – perfect for anyone looking to rent out a bedroom or share with friends. The bedrooms share an attractive bathroom finished with a high standard of fixtures and fittings. This flat has the huge benefit of being located in the vibrant heart of Clapham and within touching distance of all that the High Street has to offer in terms of food and festivities. The transport links are second to none whilst Clapham Common is also on the doorstep.

Council tax band C EPC rating C (72)

Features

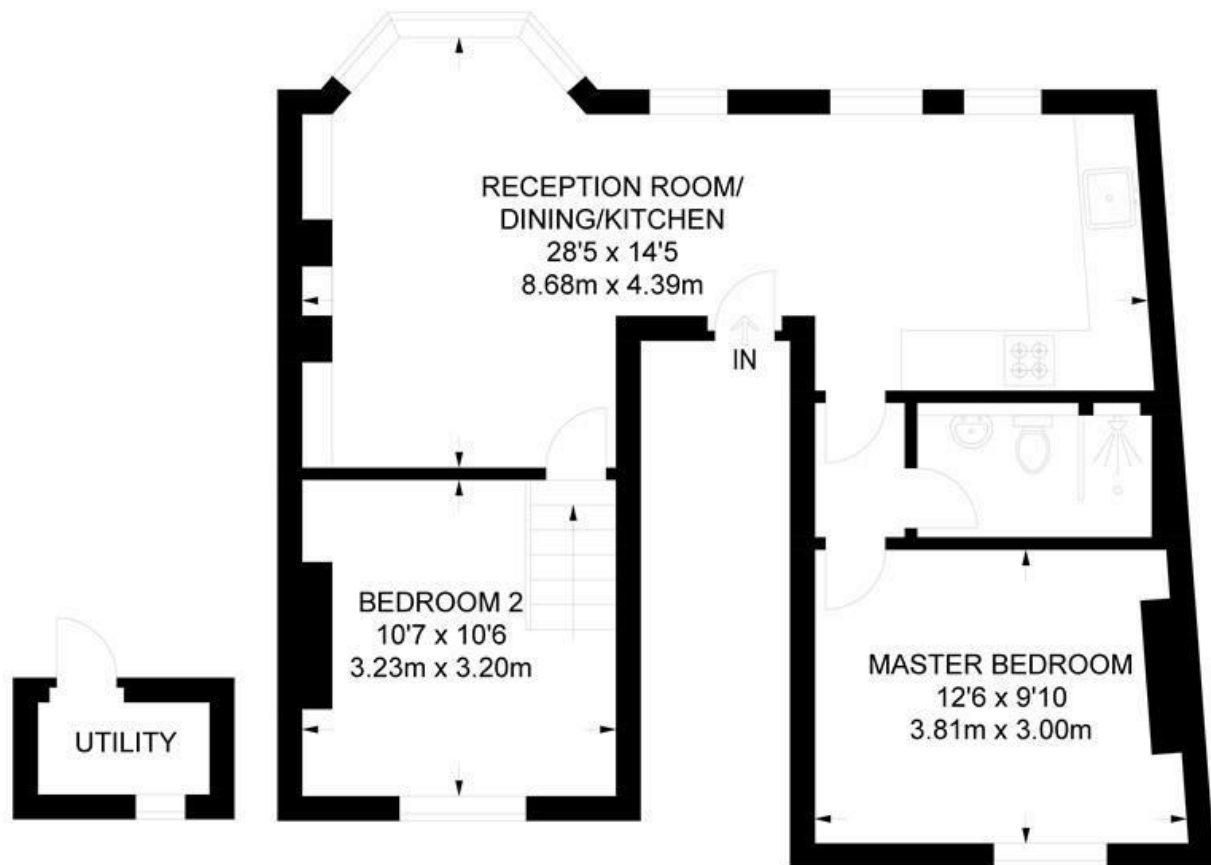
- Two double bedrooms
- Victorian conversion
- Recently refurbished
- Bright and airy throughout
- Popular road in central location
- Clapham High Street on the doorstep
- Easy access to the Northern and Victoria underground lines
- Share of freehold



Tremadoc Road, Clapham, SW4

Tremadoc Road, SW4
2 Bedroom Flat

APPROXIMATE TOTAL INTERNAL AREA: **602 SQ FT / 55.9 SQ M**



FIRST FLOOR



While we try our very best, floor plans are produced as a guide only and we take no responsibility for the precise accuracy with which any property is represented.

Tremadoc Road, Clapham, SW4

