



Brixton Hill, Brixton, SW2

4 bedroom flat - conversion for sale

£650,000

Leasehold

Property Details

Hardwood floors, beautiful sash windows, high corniced ceilings and feature fireplaces throughout the property all add to the eclectic mix of appealing character on offer, combined with a beautifully bright and airy atmosphere throughout. The private roof terrace is a generous space, ideal for hosting BBQs and savouring the warmer months of the year. Arranged over the first floor, a generous eat-in kitchen with abundant storage options and surface space sits adjacent to a stunning reception room. The two spaces are ideal for entertaining guests or relaxing and unwinding in peace. The second and third floor host the four bedrooms. Three of which are generous doubles, the top two with significant built-in storage and one featuring a particularly interesting raised alcove, a truly unique and attractive addition. The fourth bedroom is also a genuine double but could easily be repurposed to suit the needs of the purchaser and would be fantastic as a home office, guest bedroom or anything else the purchaser may require.

Features

- Four bedrooms
- Large private roof terrace
- Split-level
- Over 1200 square feet of internal space
- Beautifully characterful
- Bright and airy
- Local amenities of Brixton Hill
- Minutes from central Brixton
- Victoria line
- Chain-free

Council tax band

EPC rating D (58)

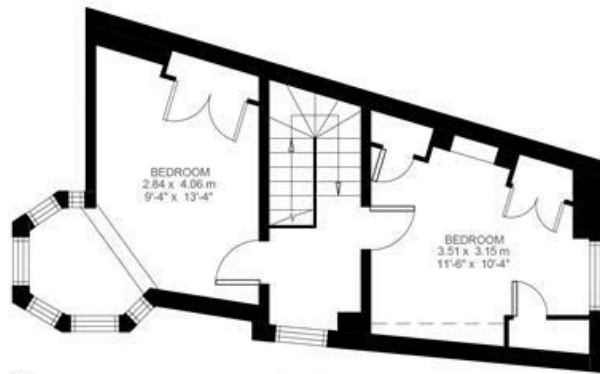




Arodene Road, Brixton Hill, SW2

4 Bedroom Flat

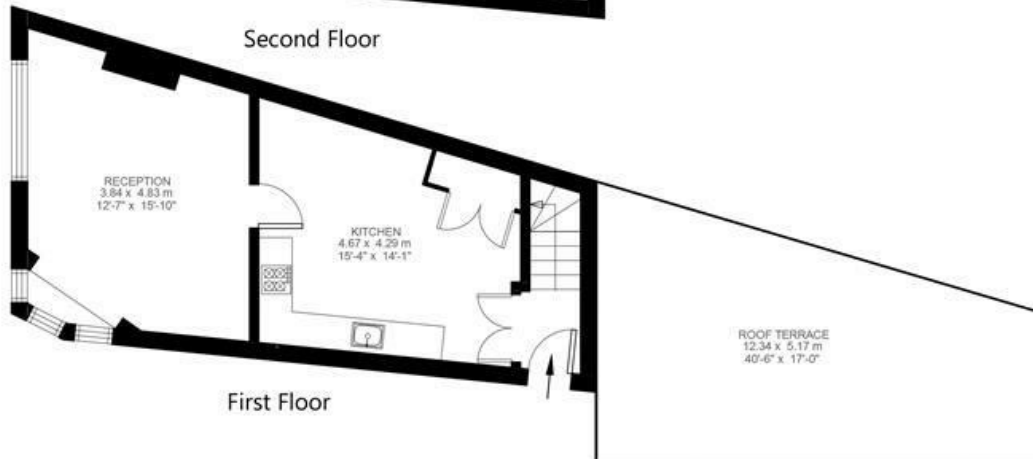
Approximate internal area: 1252 sqft 116 sqm



Third Floor



Second Floor



First Floor



While we do try our very best, floor plans are produced as a guide only and we take no responsibility for the precise accuracy with which any property is represented.

Brixton Hill, Brixton, SW2

