



Connaught Mansions, Coldharbour Lane,

1 bedroom flat for sale

£350,000

Leasehold

Property Details

A beautifully presented one double bedroom flat within this popular period building nestled on Coldharbour Lane in the heart of Brixton. This secure apartment is perfect for anyone who wants to have the wide range of amenities on offer in Brixton within close proximity but would like to remain tucked away quietly in this desirable Victorian mansion block, positioned peacefully towards the rear building away from the bustle of street noise. Forming the heart of the home is a spacious open plan kitchen and reception room, large windows flood the space with natural light. Thoughtfully configured to maximise and utilise the floorspace, this open plan space offers room for unwinding and dining. The kitchen offers countryside chic, styled with wooden worktops and all you need in storage. Adjacent, a spacious double bedroom complete with fitted wardrobes and desk, and a modern bathroom. The icing on the cake is the sizeable communal roof terrace, loved and cared for by the residents of Connaught Mansions, a real sun trap with fantastic views. As far as locations go, it doesn't get much better, this home is sure to tick boxes for a wide range of purchasers, be it those looking for a first home or pied-à-terre.

Features

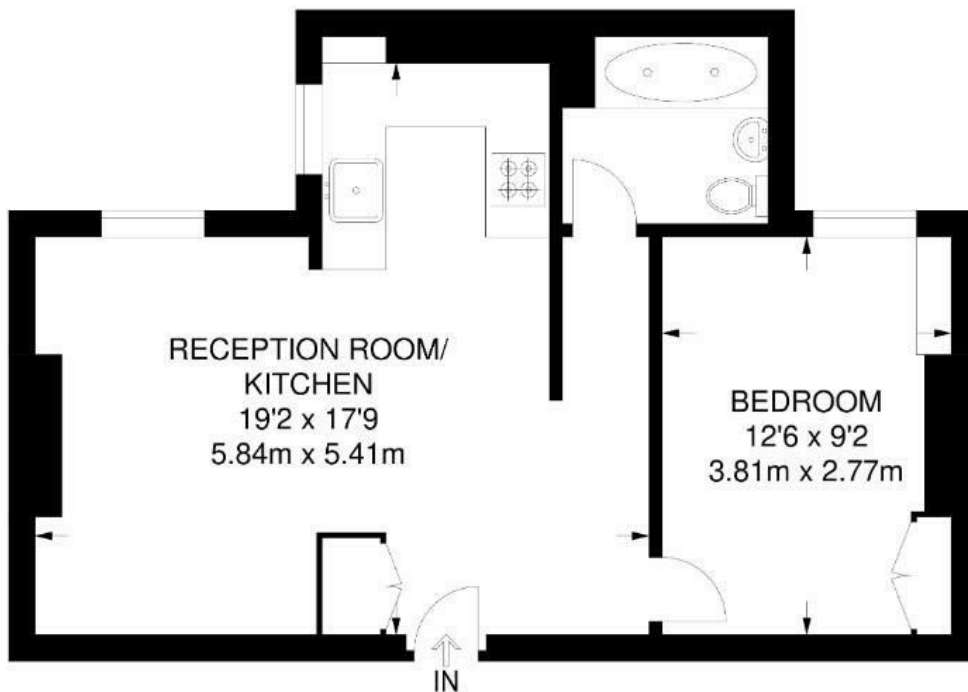
- One double bedroom
- Victorian mansion block
- Quiet setting located at the back of the building
- Large communal roof terrace
- Secure communal bike storage
- Bright and airy
- Central location in the heart of Brixton
- Start of the Victoria line in under 5 minutes' walk
- Short walk to Brockwell Park

Council tax band B EPC rating (0)



Coldharbour Lane, SW9
1 Bedroom Flat

APPROXIMATE TOTAL INTERNAL AREA: **451 SQ FT / 41.9 SQ M**



SECOND FLOOR



While we try our very best, floor plans are produced as a guide only and we take no responsibility for the precise accuracy with which any property is represented.

Connaught Mansions, Coldharbour Lane, Brixton, SW9

