



Medora Road, Brixton, SW2

2 bedroom flat - conversion for sale

£650,000

Leasehold

Property Details

A bright two double bedroom flat with private garden on a sleepy road in one of Brixton's most popular residential pockets. Medora Road is a quiet and peaceful street within close proximity to Brockwell Park and central Brixton. The principal double bedroom features a large bay window, characterful fireplace, high ceilings and flush integrated wardrobes. Still a genuine double, ideal for sharers, the second bedroom is currently being utilised as a guest room and home office with views over a small private terrace. Separating the bedrooms is a modern bathroom. The large open plan reception room has ample space to dine or lounge with leafy views over the garden. A sleek modern kitchen spans the length of the room offering integrated appliances and generous storage whilst not interrupting the flow of natural light from the skylights. Newly installed, three sets of double glazed French doors provide access to private terrace and garden. Completing this lovely home is a tanked cellar.

Features

- Two double bedrooms
- Victorian conversion
- Private garden
- Almost 820 square feet on internal space
- Bright and airy
- Tasteful, neutral decor
- Fifteen-minute walk to Brixton tube station
- Close proximity to Brockwell Park

Council tax band C

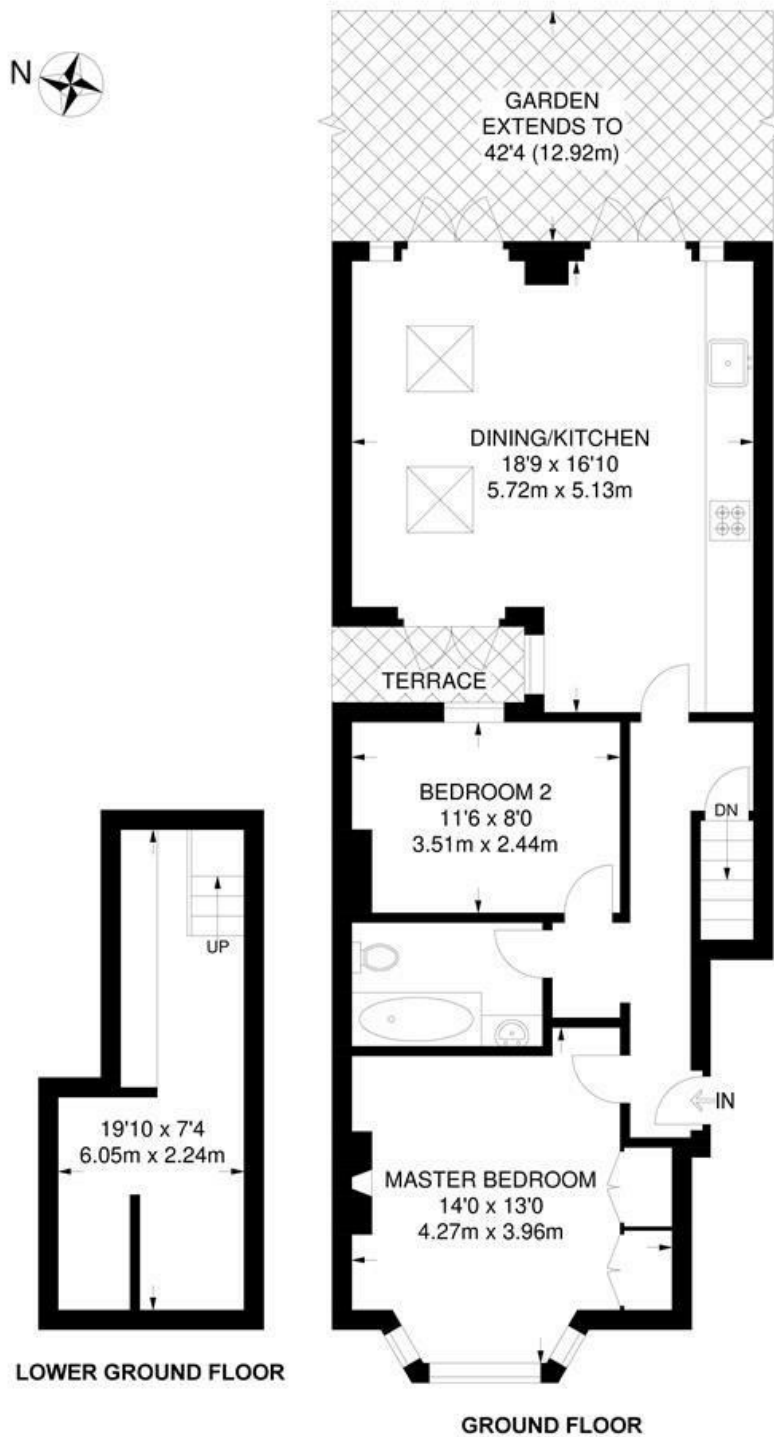
EPC rating C (74)



Medora Road, Brixton, SW2

Medora Road, SW2
2 Bedroom Flat

APPROXIMATE TOTAL INTERNAL AREA: **819 SQ FT / 76.1 SQ M**



While we try our very best, floor plans are produced as a guide only and we take no responsibility for the precise accuracy with which any property is represented.

Medora Road, Brixton, SW2

