

**Lyham Road, Brixton, SW2**

2 bedroom flat for sale

£935,000

Share of Freehold

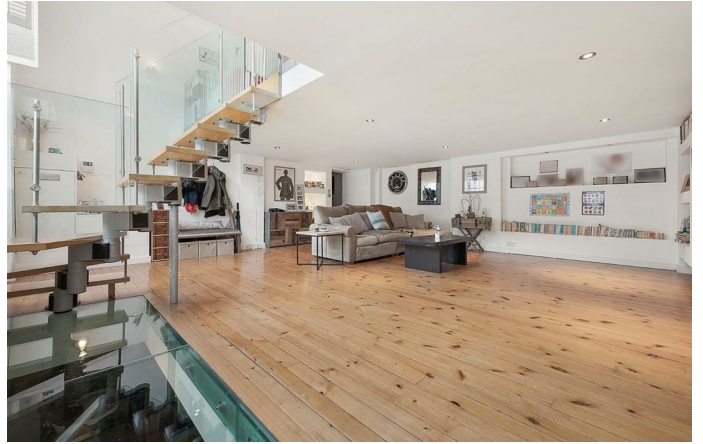
Property Details

Beautifully presented throughout, this exceptional home is flooded with light, thanks to the South-facing double-height sash windows. The property will appeal to a wide range of purchasers due to the considerable overall square footage and versatility of the space on offer, which is beautifully combined with endearing period character and appealing modern finishes. Spanning over 1740 square feet, split over three floors and set within a stunning Victorian school conversion, this South-facing loft-style apartment with two double bedrooms and two bathrooms, plus off-street allocated parking and demised outside space, has unique characteristics that allow it to stand out from other properties in this price range. Park Lofts is set on a leafy residential road, nestled between Clapham and Brixton High Streets and benefitting from all that both of these sought-after areas have to offer.

Council tax band E **EPC rating C (71)**

Features

- Two double bedrooms
- Two bathrooms and a cloakroom
- Stunning school conversion
- Split over three floors
- Over 1740 square feet of internal space
- Demised outside space
- Allocated off-street parking space
- Access to the Victoria and Northern tube lines
- Walking distance to Brixton and Clapham High Streets
- Share of freehold



Lyham Road, Brixton, SW2

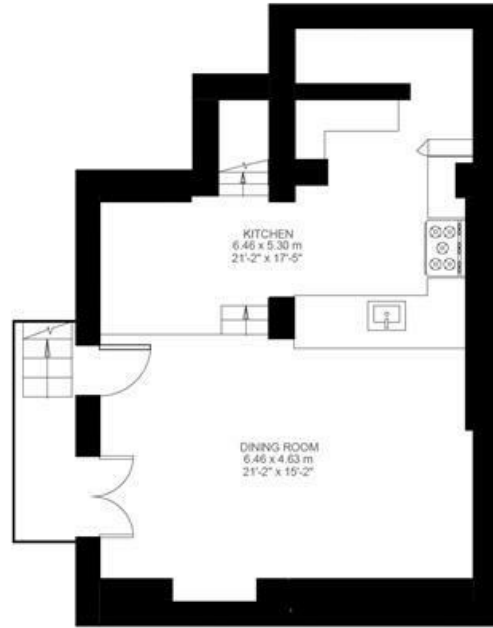
Lyham Road, Brixton, SW2

2 Bedroom Flat

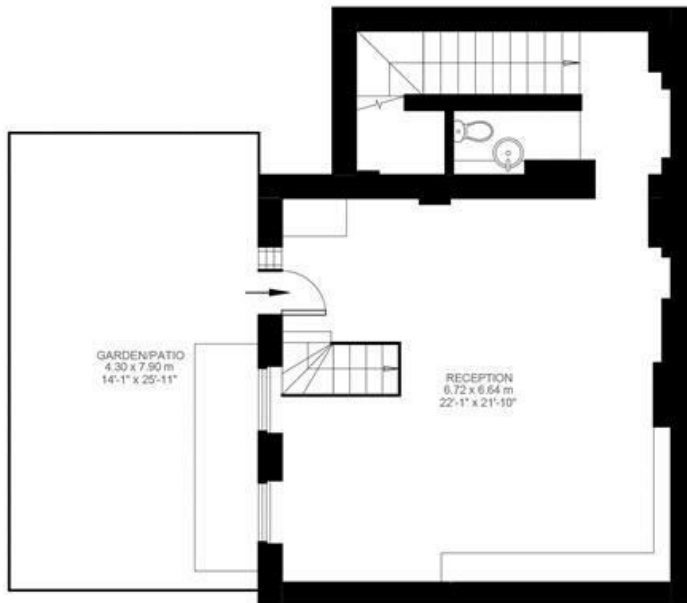
Approximate internal area: 1746 sqft 162 sqm



MEZZANINE



Lower Ground Floor



Ground Floor



While we do try our very best, floor plans are produced as a guide only and we take no responsibility for the precise accuracy with which any property is represented.

Lyham Road, Brixton, SW2

