



**Trent Road, Brixton, SW2**

2 bedroom flat - conversion for sale

**£600,000**

Share of Freehold

## Property Details

The principle bedroom boasts high ceilings, wooden floorboards and a feature fireplace, the equally charming second bedroom boasts a walk in dressing area and double doors leading out to the garden. A neutral bathroom separates the bedrooms whilst adding a level of privacy which provides the perfect home for sharers or hosting guests. The expansive open plan kitchen/ reception room provides a bright and sociable space to entertain, cook and unwind. The well-equipped neutral kitchen benefits from a light-well and double doors to the low-maintenance South-facing garden. Accessed from the reception is a cellar for additional storage needs. With almost 850 square foot of space on offer this flat makes a fantastic first home.

## Features

- Two double bedrooms
- South-facing garden
- Victorian conversion
- Almost 850 square feet
- Recently re-decorated
- Bright and airy
- Brixton Station within seven minutes
- Brockwell Park a short stroll
- Chain-free

Council tax band C    EPC rating D (59)

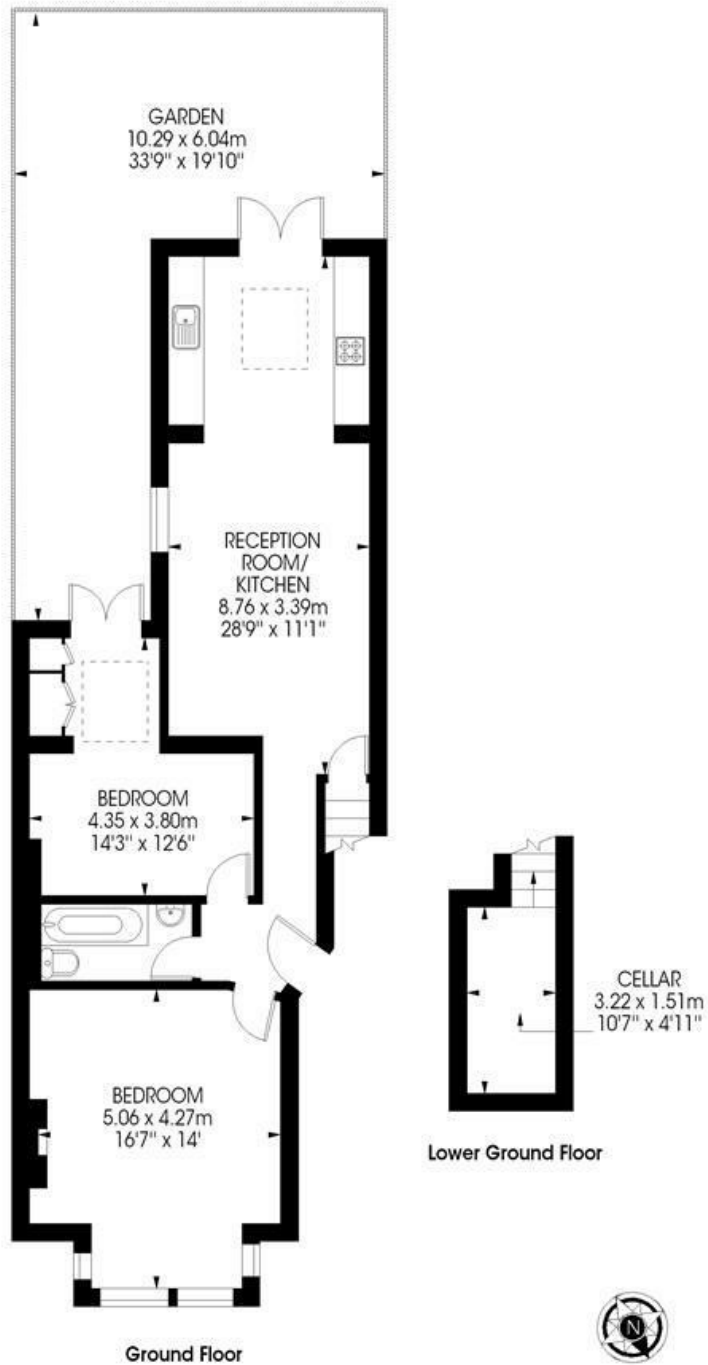




Trent Road, Brixton, SW2

Trent Road Brixton, SW2  
2 bedroom flat

Approximate internal area: 849 sqft / 78.87 sqm



While we try our very best, floor plans are produced as a guide only and we take no responsibility for the precise accuracy with which any property is represented.

Trent Road, Brixton, SW2

