



Crescent Lane, Clapham, SW4

1 bedroom flat - purpose built for sale

£350,000

Leasehold

Property Details

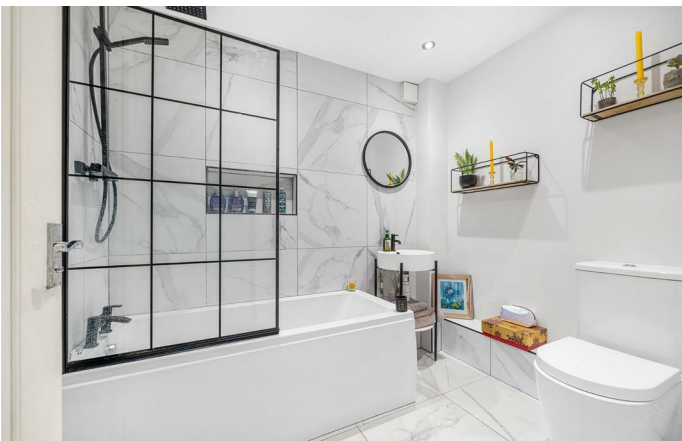
Situated within a quiet purpose built development this one bedroom apartment with private balcony is well-located in a residential pocket between Clapham and Brixton. Tucked away on the second floor, the flat benefits from city views and a variety of local amenities on the doorstep. A spacious open plan reception room spans the depth of the apartment with a comfortable lounge area, ample room to dine and a stylish kitchen with contemporary gloss cabinetry and wooden work surfaces. Large-pane sliding doors lead out from the lounge area to the private balcony where city views can be relished. Enjoying the same views the bedroom is a comfortable double, neutrally decorated. Completing the interior is a generous luxury bathroom with a rain shower and bathtub. Incredibly energy efficient, this secure apartment would make a fantastic first home. Further benefits include access to a secure bike storage room and a local convenience store just a moment away.

Features

- One double bedroom
- Private balcony with city views
- Purpose built apartment
- Bike storage
- Energy efficient
- Abbeville Village a ten-minute stroll
- Walking distance to Clapham and Brixton centres
- Cycle to Abbeville Village, Clapham High Street or Brixton High Street in a couple of minutes
- Northern Line and Victoria Line in under fifteen minutes walk

Council tax band C

EPC rating B (81)

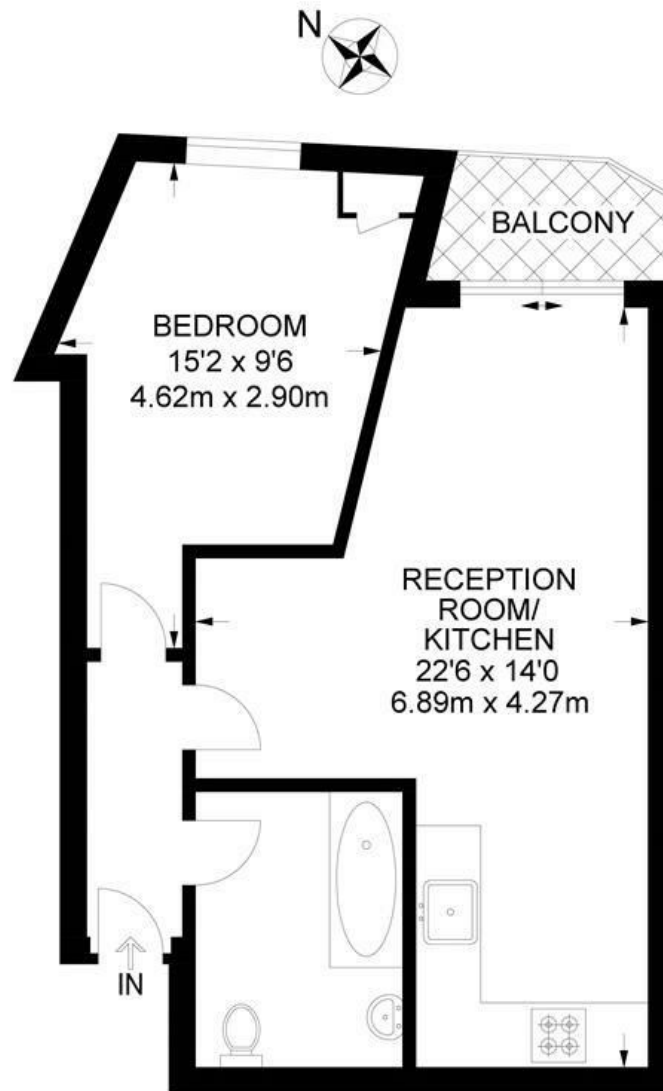


Crescent Lane, Clapham, SW4

Crescent Lane, SW4

1 Bedroom Flat

APPROXIMATE TOTAL INTERNAL AREA: **433 SQ FT / 40.2 SQ M**



SECOND FLOOR



While we try our very best, floor plans are produced as a guide only and we take no responsibility for the precise accuracy with which any property is represented.

Crescent Lane, Clapham, SW4

