



Edithna Street, Clapham, SW9

1 bedroom flat - conversion for sale

£515,000

Share of Freehold

Property Details

A beautifully presented one double bedroom garden flat, located on Edithna Street, a neighbourly road in a prime location, a short walk from the bustling Clapham High Street, Brixton and Stockwell. The spacious reception room is has shuttered bay windows and high, corniced ceilings. Characterful alcoves provide storage and space for a home office, whilst the window seat is the perfect place to relax. Adjacent, the double bedroom is nestled away from the street with views over the garden, a peaceful room with plenty of space for storage. Additional storage is also built-in to the hallway. A separate dine-in kitchen is equipped with modern appliances and has plenty of counter space, large windows and room for a breakfast bar. The modern bathroom has both bath and a shower, finished with heated towel rail and storage. In addition to the private front garden, the flat has a private South-West facing garden to the rear, a low-maintenance sunny spot. Subject to the necessary permissions, the new purchaser will have the potential to extend, converting the flat to have two bedrooms should they need to grow into the property in the future.

Features

- One double bedroom
- Private South-West facing garden
- Victorian conversion
- Share of freehold
- Beautifully presented throughout
- Potential to extend STPP
- Clapham High Street and station a ten-minute stroll
- Amenities of Brixton and Stockwell a short walk away
- Access to both the Northern and Victoria lines

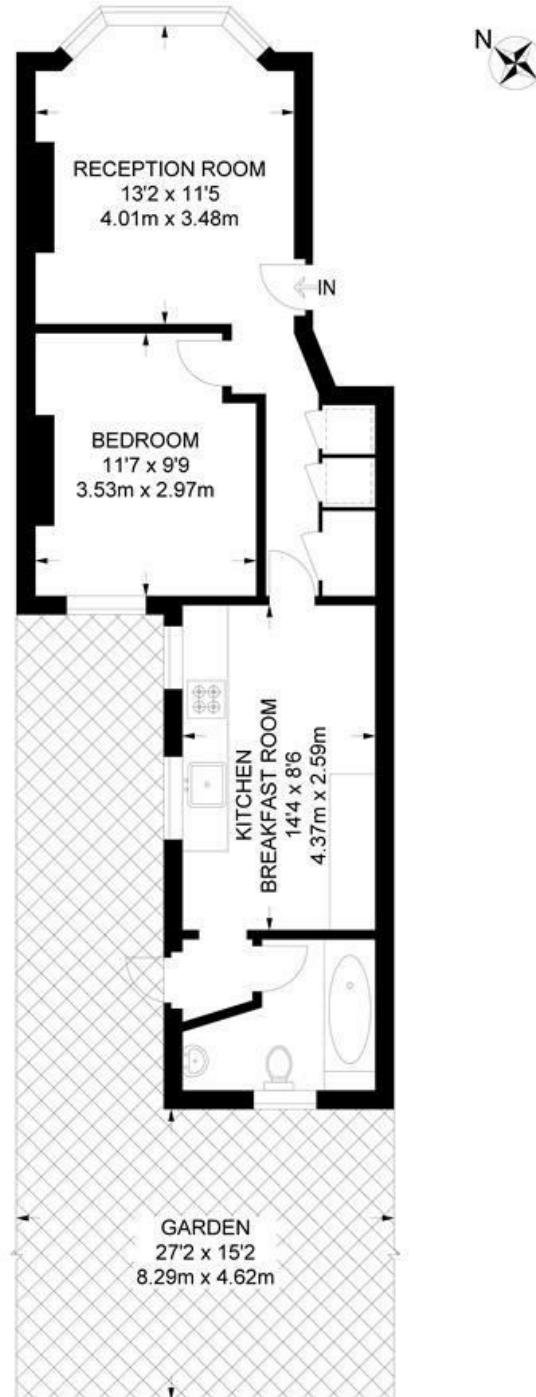
Council tax band C EPC rating C (69)



Edithna Street, Clapham, SW9

Edithna Street, SW9
1 Bedroom Flat

APPROXIMATE TOTAL INTERNAL AREA: 496 SQ FT / 46.1 SQ M



GROUND FLOOR



While we try our very best, floor plans are produced as a guide only and we take no responsibility for the precise accuracy with which any property is represented.

Edithna Street, Clapham, SW9

