

Holmewood Gardens, Brixton, SW2

1 bedroom flat - conversion for sale

£425,000

Share of Freehold

Property Details

A one bedroom garden flat with an appealing level of charming period character and the potential for the new purchaser to stamp their own mark. Arranged over the ground floor of a handsome Victorian terrace on the highly sought-after Holmewood Gardens, the property is surrounded by greenery, overlooking a beautiful garden square, situated within a quiet residential pocket of Brixton Hill. The reception room enjoys leafy views, with generous proportions ideal for lounging in front of the original fireplace. The bedroom is tucked away peacefully, a comfortable double with a large window overlooking the private garden behind. Subject to the necessary permissions, there is the potential to extend the property, adding a second bedroom. A sizeable bathroom has a large window and an attractive stained glass panel linking to the hallway. The flat further benefits from a cellar, perfect for storing away rarely used belongings. A separate dine-in kitchen resides to the rear, fully equipped with on-trend black shaker style units and ample space for a dining table. A patio door leads out to the large private garden, which is deceptively spacious once pruned.

Features

- One double bedroom
- Potential to convert into two bedrooms STPP
- Large private garden
- Victorian conversion
- Leafy setting overlooking park
- Almost 700 square feet
- Fifteen-minute walk to Brixton
- Excellent variety of transport links
- Amenities of Brixton, Streatham, Herne Hill and Clapham
- Chain-free

Council tax band C EPC rating (null)



Holmewood Gardens, Brixton, SW2

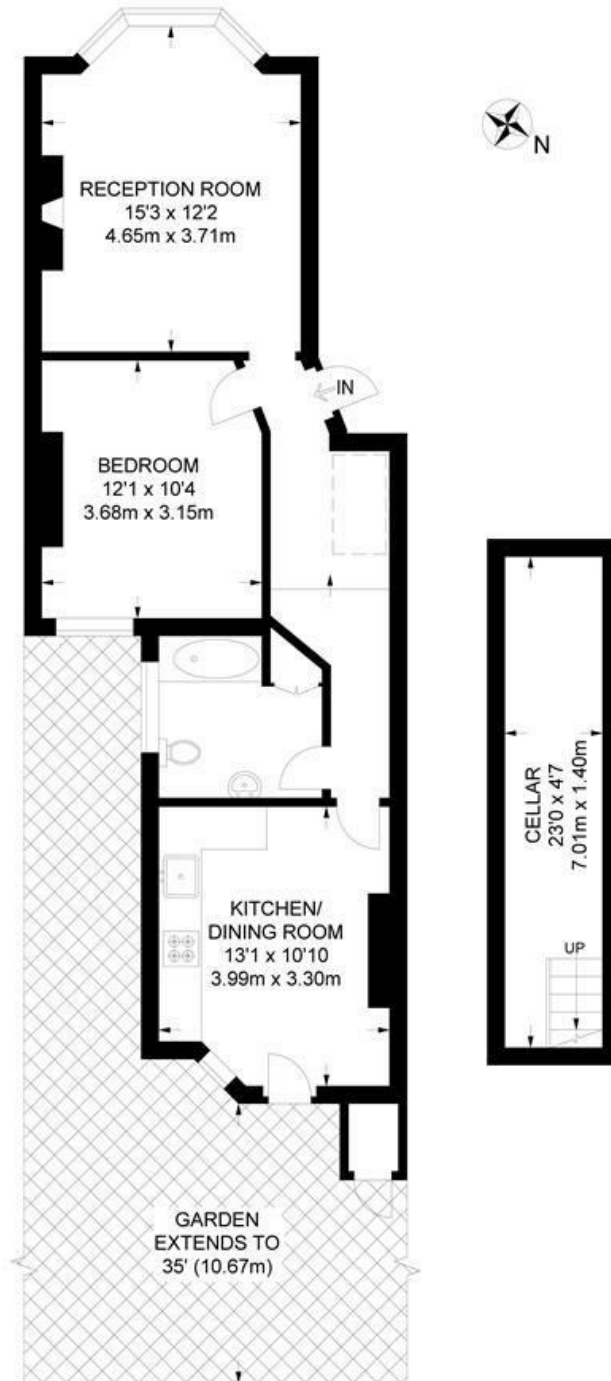
Holmewood Gardens, SW2

1 Bedroom Flat

APPROXIMATE INTERNAL AREA: 592 SQ FT / 55 SQ M

CELLAR: 105 SQ FT / 9.7 SQ M

APPROXIMATE TOTAL INTERNAL AREA: 697 SQ FT / 64.7 SQ M



GROUND FLOOR



While we try our very best, floor plans are produced as a guide only and we take no responsibility for the precise accuracy with which any property is represented.

Holmewood Gardens, Brixton, SW2

