

Dulwich Road, Herne Hill, SE24

1 bedroom flat - conversion for sale

£350,000

Leasehold

Property Details

A beautiful one bedroom flat with views over Brockwell Park opposite, nestled within the heart of Herne Hill. This well-presented property will appeal to a wide range of purchasers due to its bright and airy character and enviable location. Forming the heart of the home an open plan reception room is bathed in sunlight from large double glazed windows, with a South-facing aspect this is the ideal spot in which to lounge, dine or cook whilst relishing views over the park. Boasting high ceilings, this generous room provides space for a comfortable lounge area and large dining table to the front whilst a thoughtful configuration maximises the space on offer, wrapping around to a contemporary kitchen. The kitchen is styled with steel units, offset by wooden worktops and trendy blue tiling with ample storage options and generous work surfaces designed to enable a sociable cooking environment. Peacefully set to the rear of the property, the double bedroom is equipped with built in wardrobes and styled in warming yet neutral tones. Completing this perfectly formed home, a bright and airy bathroom is finished with fresh décor and equipped with multiple storage options plus a shower and bath. Early registration of interest is advised.

Features

- One double bedroom
- Victorian conversion
- Views over Brockwell Park opposite
- Central location
- Bright and airy throughout
- Fantastic first time purchase or rental investment
- Moments from Herne Hill station
- Brixton a fifteen minute stroll away
- Chain-free

Council tax band B EPC rating D (58)

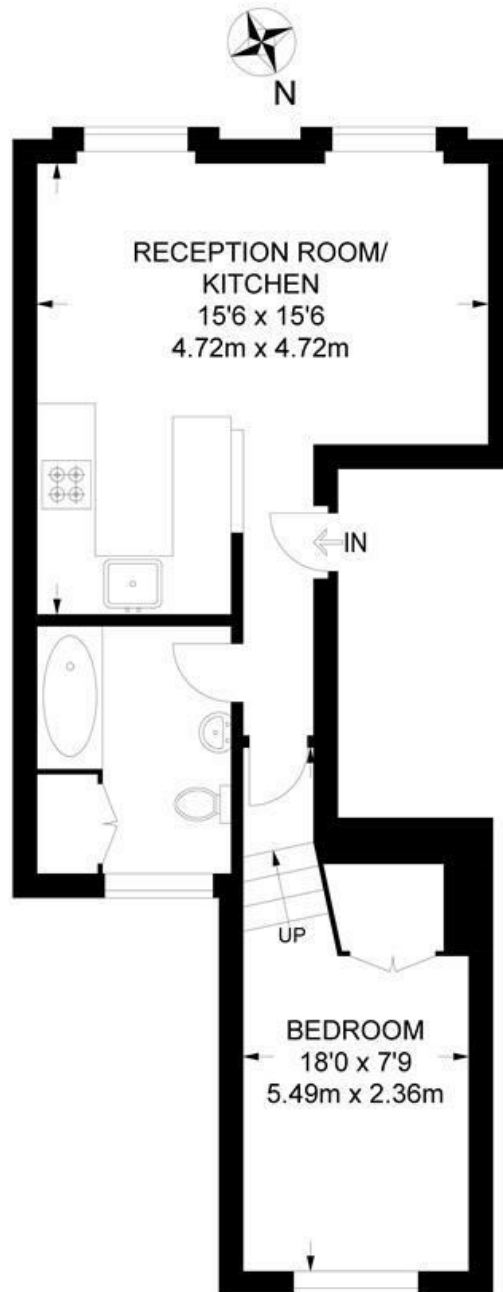


Dulwich Road, Herne Hill, SE24

Dulwich Road, SE24

1 Bedroom Flat

APPROXIMATE TOTAL INTERNAL AREA: **405 SQ FT / 37.6 SQ M**



FIRST FLOOR



While we try our very best, floor plans are produced as a guide only and we take no responsibility for the precise accuracy with which any property is represented.

Dulwich Road, Herne Hill, SE24

