



Beta Place, Clapham, SW4

2 bedroom flat - penthouse for sale

£950,000

Share of Freehold

Property Details

A magnificent two bedroom penthouse apartment with a huge private roof terrace, set within a secure gated Grade II-listed Victorian school conversion with allocated off-street parking and an on-site gym and sauna. Beta Place is a highly sought-after residence quietly tucked away within extensive communal grounds, close to both Clapham and Brixton. The open plan reception room has neutral décor and double-height ceilings to one side flooding this idyllic room with natural light. With significant space to lounge, cook and dine, this room is sure to impress. The kitchen is flooded with light from above, with sleek cabinetry offering ample storage space and generous worktops. Shuttered French doors lead onto a private roof terrace offering c.1,000 square feet of outside space with 360° views across London. The principal bedroom is a large suite with panoramic views, built-in wardrobes and an en-suite wet room. Thoughtfully configured, the second bedroom features a raised bed, built-in wardrobes and storage, a seating area and space for a desk. The luxurious family bathroom boasts double sinks with a raised bathtub contrasting against feature tiling. This unique penthouse further offers an abundance of loft and eaves storage.

Council tax band F EPC rating C (69)

Features

- Two bedrooms and two bathrooms
- Huge private roof terrace with 360 degree views
- Grade II-listed Victorian school conversion
- 1,580 square feet of internal space
- Gym and sauna on-site
- Allocated off-street parking
- Expansive communal grounds
- A ten-minute stroll to both Clapham and Brixton centres
- Northern and Victoria Lines
- Share of freehold



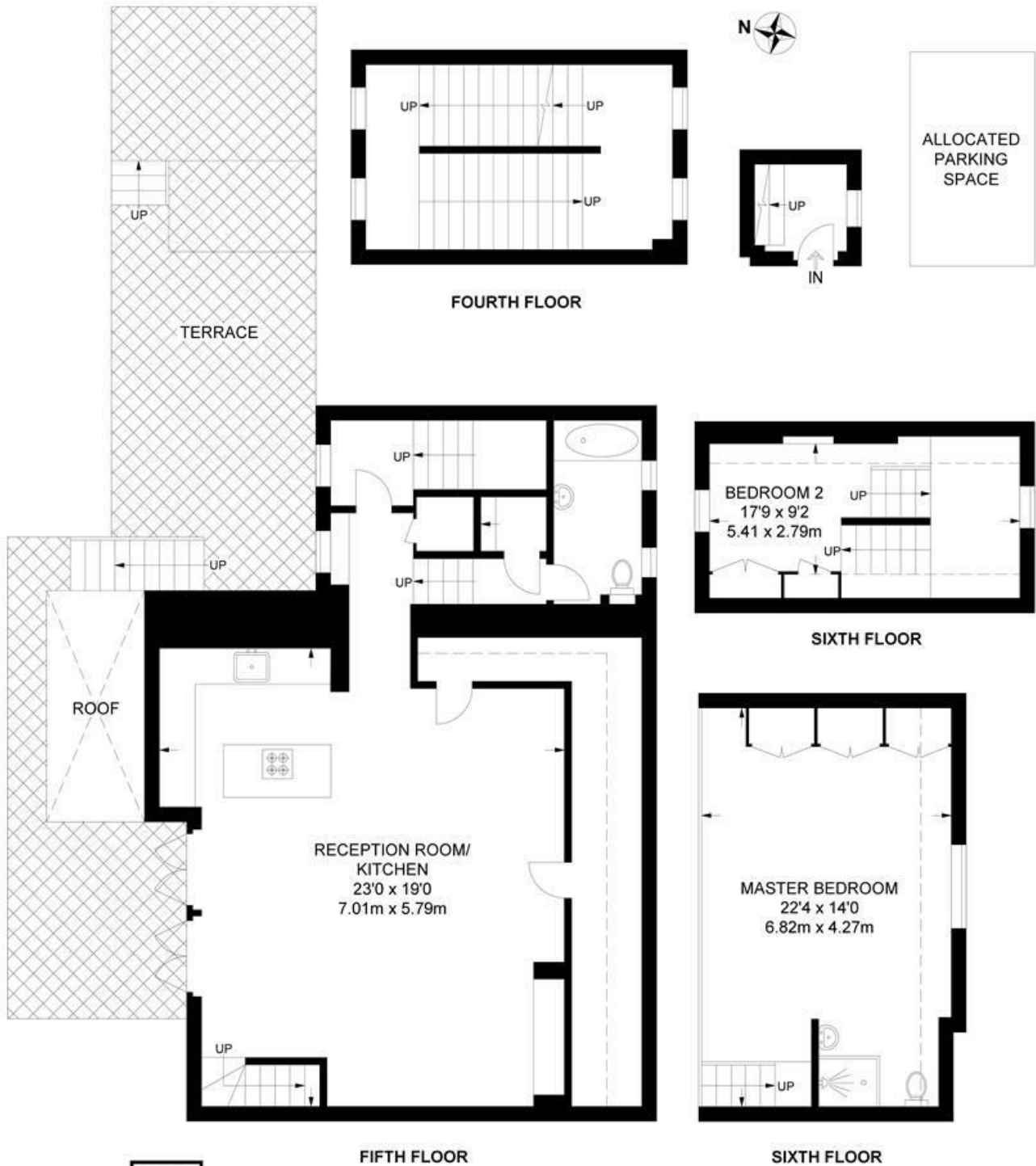


Beta Place, Clapham, SW4

Beta Place, SW4
2 Bedroom Flat

APPROXIMATE TOTAL INTERNAL AREA: 1580 SQ FT / 146.8 SQ M

APPROXIMATE TOTAL EXTERNAL AREA: 1000 SQ FT / 92.9 SQ M



While we try our very best, floor plans are produced as a guide only and we take no responsibility for the precise accuracy with which any property is represented.

Beta Place, Clapham, SW4

