

## Horsford Road, Brixton, SW2

2 bedroom flat - conversion for sale

Share of Freehold

### Property Details

A recently refurbished two bedroom Victorian flat with a private South-facing garden, situated on a quiet street within close proximity to a multitude of amenities, an eight-minute stroll from Brixton station. Nestled behind shuttered bay windows, the reception room boasts high ceilings with ornate cornicing, wooden flooring and ample space to lounge in front of the feature fireplace. Recently installed, the separate kitchen has aesthetic appeal with wooden work surfaces spanning lustrous white cabinetry, offset by a flash of distinction from a mirrored splashback wall. Integrated appliances, ample storage and a breakfast bar area are also on offer. The principal bedroom is a sizeable double overlooking the garden with built-in wardrobe space, new wooden flooring and a patio door with garden access. The second bedroom also enjoys direct garden access and provides a space that can be repurposed to suit the needs of the purchaser, whether as a bedroom or a home office as it is currently. Fresh and contemporary, the newly fitted bathroom is furnished with both shower and bath. A cellar completes the interior of this attractive home. The large South-East facing private garden is the ideal low-maintenance green spot for soaking up the sun.

### Features

- Two bedrooms
- South-facing private garden
- Victorian conversion
- Recently refurbished
- Planning permission granted for a wrap-around extension
- Bright and airy
- Separate kitchen and reception room
- Moments to local shops, cafes and bars
- Brixton Station within seven minutes
- Brockwell Park a short stroll away

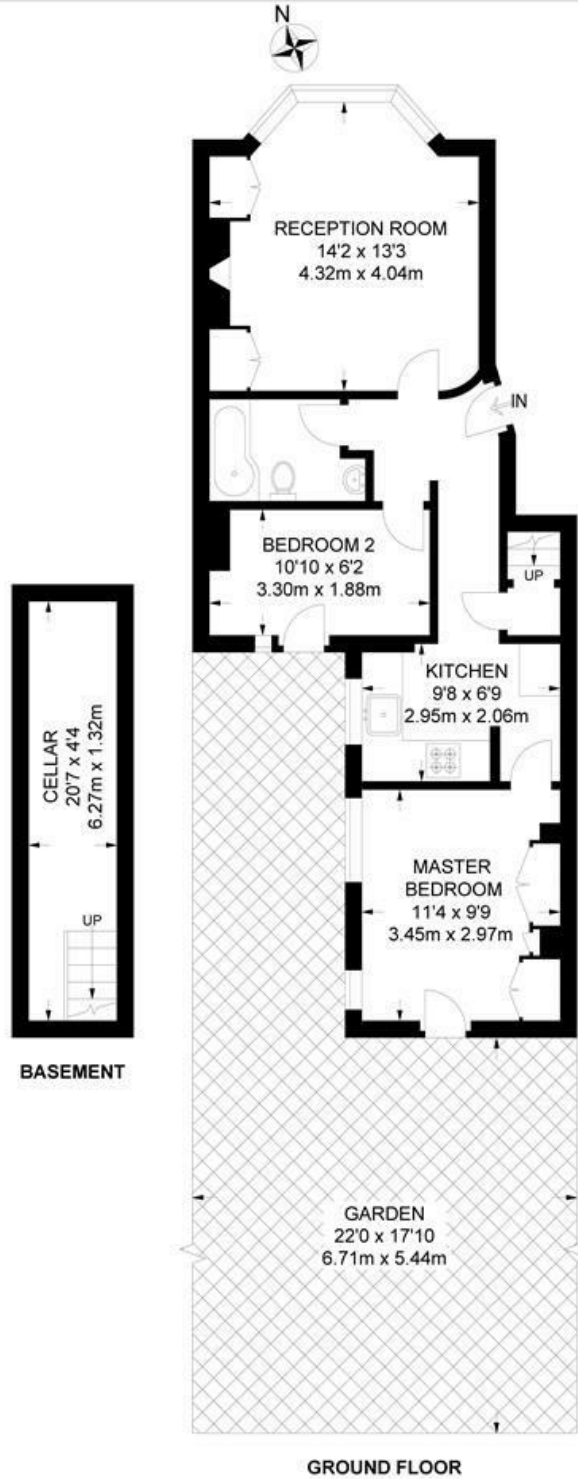
Council tax band C    EPC rating C (72)



Horsford Road, Brixton, SW2

**Horsford Road, SW2**  
**2 Bedroom Flat**

APPROXIMATE TOTAL INTERNAL AREA: 630 SQ FT / 58.5 SQ M



While we try our very best, floor plans are produced as a guide only and we take no responsibility for the precise accuracy with which any property is represented.

Horsford Road, Brixton, SW2

