



Union Road, Clapham, SW4

3 bedroom maisonette for sale

£580,000

Leasehold

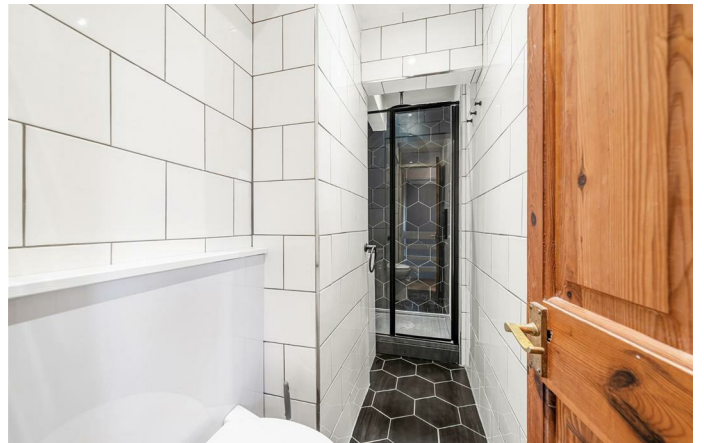
Property Details

A beautiful three bedroom, two bathroom purpose built maisonette with a South-West facing terrace, located on a popular road in the heart of Clapham. The reception room is a generous space bathed in natural light from large sliding doors to the private terrace which enjoys views of London landmarks and sunlight from lunch to evening in the summer. The separate kitchen offers plentiful worktop and storage space with neutral styling plus space for a large dining table. A recently refurbished bathroom with shower completes the upper floor. All three bedrooms are doubles, two of which are particularly spacious with large modern windows and built-in wardrobe space providing a separation between the rooms to provide privacy for sharers. At the opposing side of the property, the third bedroom is currently being utilized as a home office and guest room, currently with a fold-down double bed and built-in wardrobe. The main bathroom is well-sized and fitted with both bath and shower, ample storage. Additional hallway storage also provides the capacity to store away belongings not used on a daily basis.

Council tax band D **EPC rating C (70)**

Features

- Three bedrooms and two bathrooms
- South-West facing private terrace
- Separate dine-in kitchen and reception room
- 921 square feet of internal living space
- Split over two floors with own front door
- Clapham High Street and Old Town a ten-minute walk
- Battersea Power Station shops and restaurants a twenty-minute stroll
- Northern and Victoria lines both under a ten-minute walk

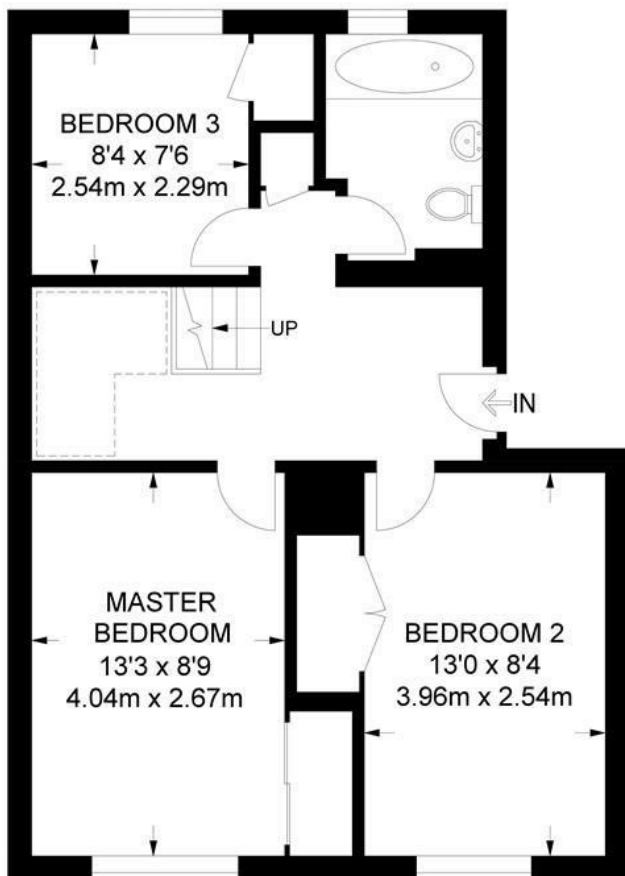




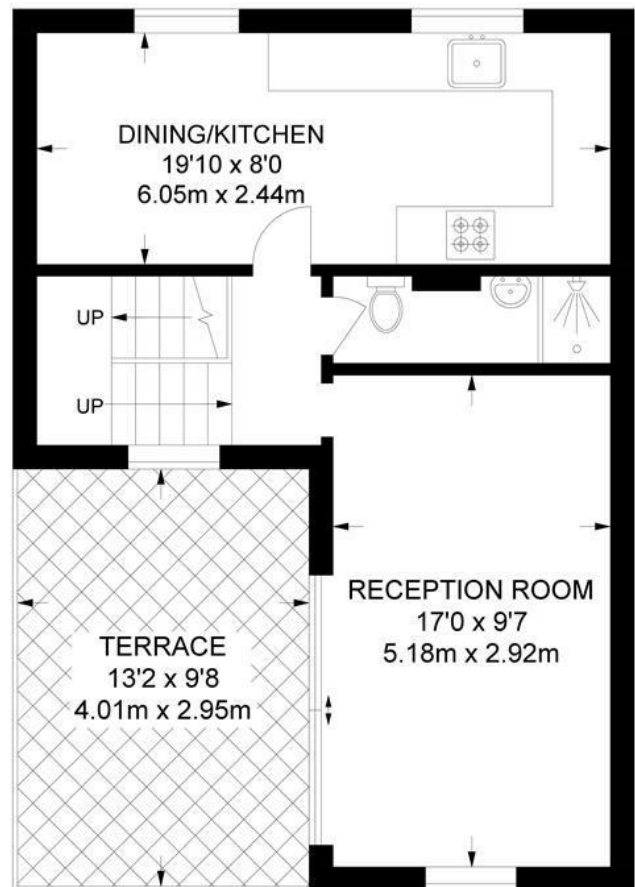
Union Road, Clapham, SW4

Union Road, SW4
3 Bedroom Flat

APPROXIMATE TOTAL INTERNAL AREA: **921 SQ FT / 85.6 SQ M**



SECOND FLOOR



THIRD FLOOR



While we try our very best, floor plans are produced as a guide only and we take no responsibility for the precise accuracy with which any property is represented.

Union Road, Clapham, SW4

