

**Sidney Road, London, SW9**

4 bedroom house - end terrace to let

**£850 Per Week**

Furnished

## Property Details

A fantastic end of terrace, four double bedroom Victorian house suitable for up to four sharers & family tenancies- Situated around an 8 minute walk from Stockwell Tube Station. This beautiful and spacious house comprises four generously sized double bedrooms, an open plan kitchen and reception which leads onto your own private outdoor space ideal for escaping the hustle and bustle of busy London and this property comes complete with two sleek and contemporary family sized bathrooms. Living here , you'll be around a thirteen minute walk from Brixton high street and you will be around a fifteen minute walk from all that Clapham high street has to offer.

Council tax band E      EPC rating E (44)

## Features

- Private Garden
- Sought after location
- Walking distance to three tube stations
- 4 Double Bedrooms
- 2 Bathrooms
- Bright and Airy
- Open Plan Kitchen and Reception
- HMO licence





Sidney Road, London, SW9

## Sidney Road

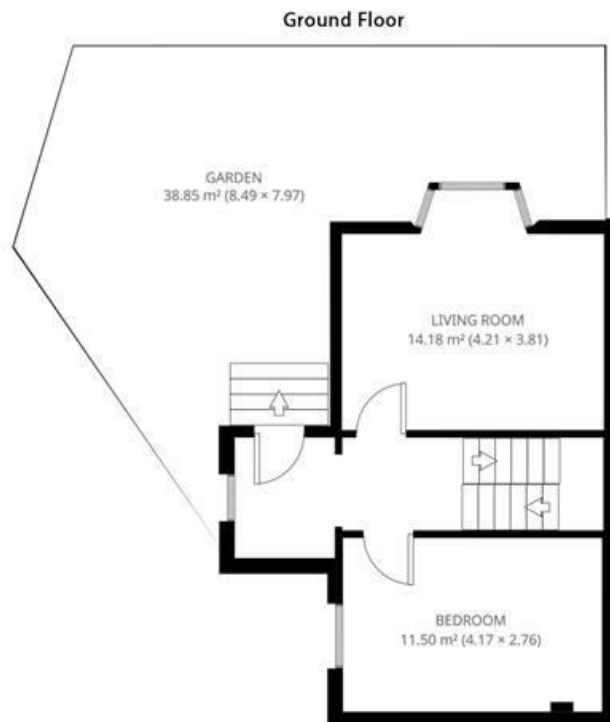
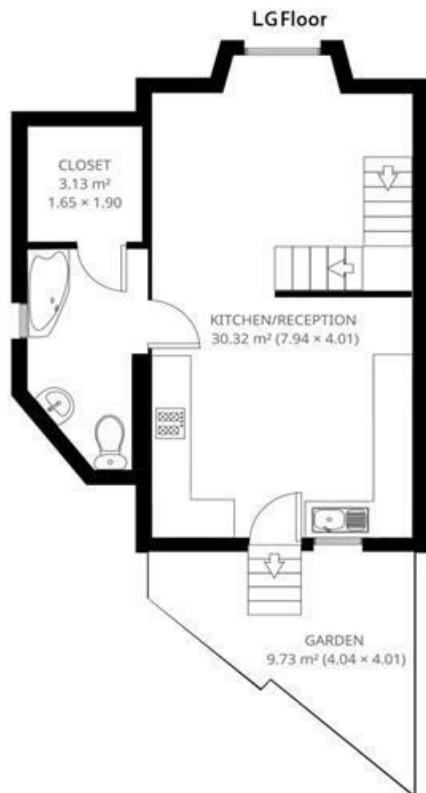


3 Bed House.

Approx internal area:

1187 sqft 110 sqm

While we do try our very best, floor plans are produced as a guide only and we take no responsibility for the precise accuracy with which any property is represented



Sidney Road, London, SW9

