



Christchurch Road, Brixton, SW2

2 bedroom flat for sale

£535,000

Share of Freehold

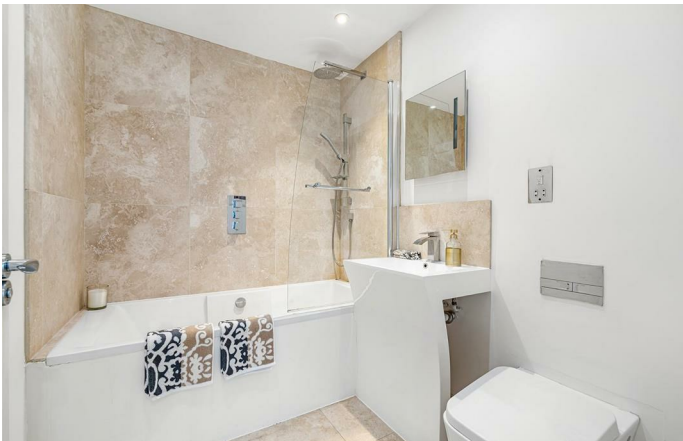
Property Details

Boasting two generously-sized double bedrooms, two bathrooms, and beautiful modern fittings and finishes throughout, this fantastic flat is likely to attract a wide range of purchasers. The flat has been renovated throughout meaning the purchaser can make the most of their brand new home, stamping their own mark over time. The fully integrated, stylish kitchen has masses of storage options, solid wooden worktops and a trendy breakfast bar. The reception area provides ample space in which to relax and dine, with large sash windows allowing natural light to flood the room. The two bedrooms are both large doubles; the principal bedroom is particularly impressive, boasting an en-suite shower room. There is a further family sized bathroom, finished to a high standard. The property is set up with a smart home system, meaning the lighting, heating and security is all controlled through the same set up, with the option to add a music system in as well.

Features

- Two double bedrooms
- Two bathrooms
- Newly refurbished throughout
- Over 770 square feet of internal living space
- Excellent transport links within a few minutes' walk
- Close to Brockwell Park
- Share of freehold
- Chain-free

Council tax band D EPC rating C (80)



Christchurch Road, Brixton, SW2

Christchurch Road, SW2
2 Bedroom Flat

APPROXIMATE TOTAL INTERNAL AREA: 772 SQ FT / 71.7 SQ M



FIRST FLOOR



While we try our very best, floor plans are produced as a guide only and we take no responsibility for the precise accuracy with which any property is represented.

Christchurch Road, Brixton, SW2

