

Fairmount Road, London, SW2

2 bedroom flat for sale

£575,000

Share of Freehold

Property Details

A two double bedroom garden flat in a converted period townhouse on Fairmount Road. The property has a stunning, larger than average, south-west facing garden which is perfect for entertaining and relaxing. The property comprises a separate reception room, a modern kitchen, to double bedrooms and a bathroom. Fairmount is situated a ten minute walk to Brixton tube station and a five minute stroll to the green open spaces of Brockwell Park. A fifteen minute walk across the park brings you to Herne Hill station and the many pubs and cafes the area is famous for. Share of freehold. Chain free.

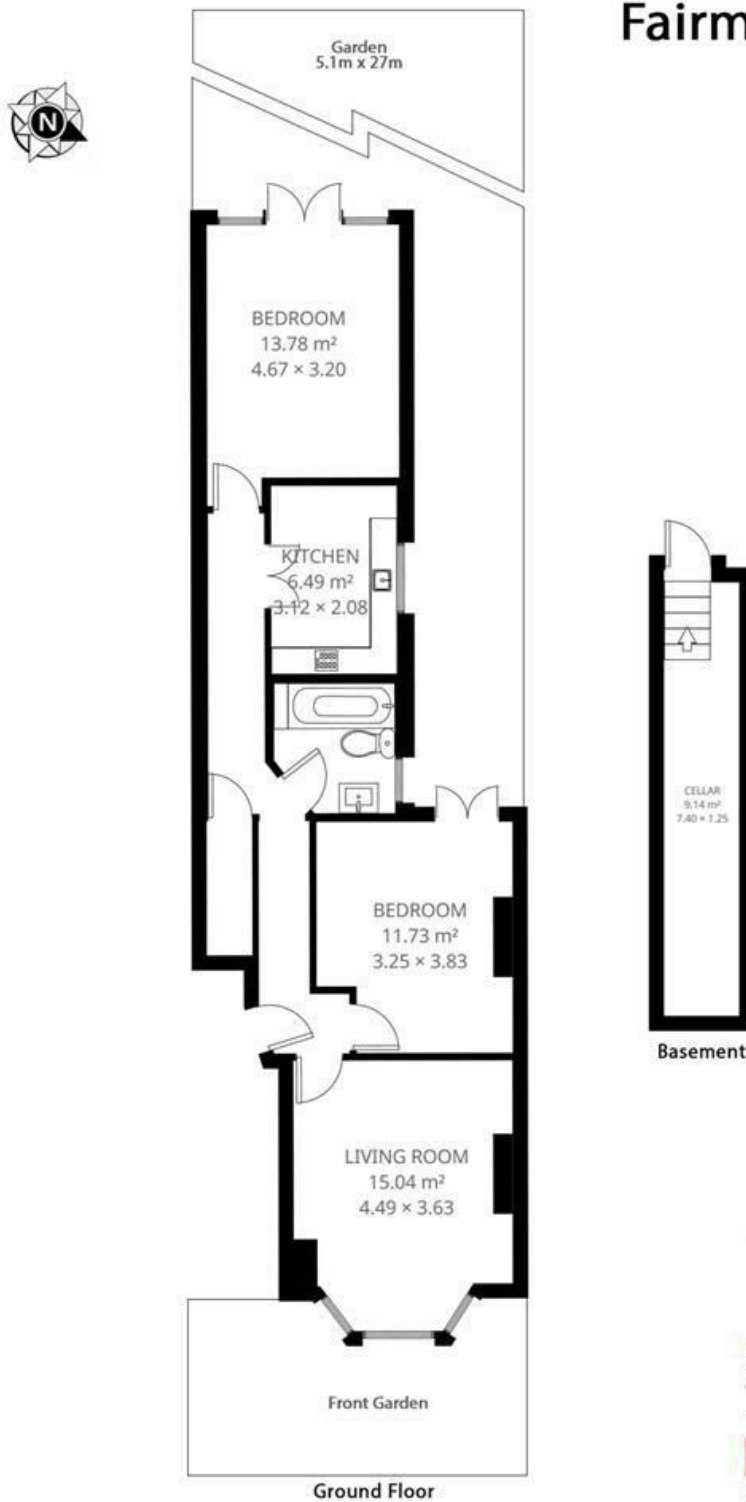
Features

- Chain free
- Victorian
- Sw facing private garden
- Characterful features
- Highly desirable road

Council tax band D EPC rating C (77)



Fairmount Road



2 Bed Flat.
Approx internal area:

794 sqft 73.75 sqm

While we do try our very best, floor plans are produced as a guide only and we take no responsibility for the precise accuracy with which any property is represented.

Fairmount Road, London, SW2

