

Beechdale Road, Brixton, SW2

2 bedroom flat - conversion for sale

£499,950

Leasehold

Property Details

This two double bedroom, two bathroom flat occupies the first floor of a handsome Victorian terrace on Beechdale Road, a highly sought-after residential road, perfectly located for the amenities and transport links in central Brixton, a short walk from Brockwell Park. The heart of the home is the impressive open-plan reception room, large enough to cook, dine, relax and entertain. The lounge area enjoys a contemporary focal point of fluted carpentry and storage plus a large bay window flooding the room with natural light. The modern kitchen is sleek with plentiful storage and worktops, including breakfast bar. Both bedrooms are tucked away from the sociable spaces. The principal bedroom is a generous double boasting high ceilings, a large bay window and built-in wardrobes, with a neutral en-suite. The second bedroom is also a genuine double with high ceilings and built-in wardrobes, perfect for those who wish to rent out a room, with further appeal of having separate bathrooms. The main bathroom completes this attractive home, equipped with both shower and bath. All in all, a gem of a flat - early registration of interest is advised. Chain-free.

Council tax band C EPC rating (null)

Features

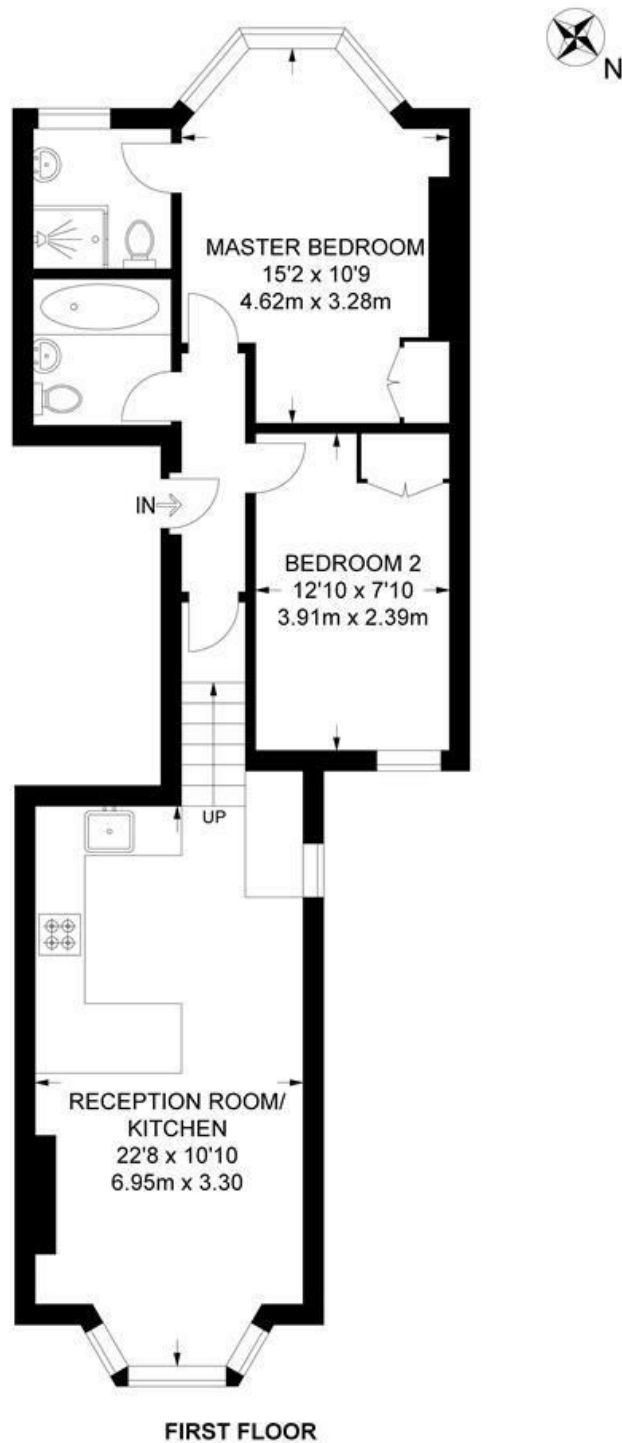
- Two double bedrooms
- Two bathrooms
- Victorian conversion
- Over 600 square feet of internal space
- Quiet, popular residential street
- Brockwell Park a five-minute stroll away
- Local amenities of Brixton Hill
- Brixton and Herne Hill both a short walk away
- Excellent transport links including Victoria Line, Thames Link and Trains
- Chain-free



Beechdale Road, Brixton, SW2

Beechdale Road, SW2
2 Bedroom Flat

APPROXIMATE TOTAL INTERNAL AREA: 608 SQ FT / 56.5 SQ M



While we try our very best, floor plans are produced as a guide only and we take no responsibility for the precise accuracy with which any property is represented.

Beechdale Road, Brixton, SW2

