

Brixton Hill, Brixton, SW2

2 bedroom flat for sale

£695,000

Leasehold

Property Details

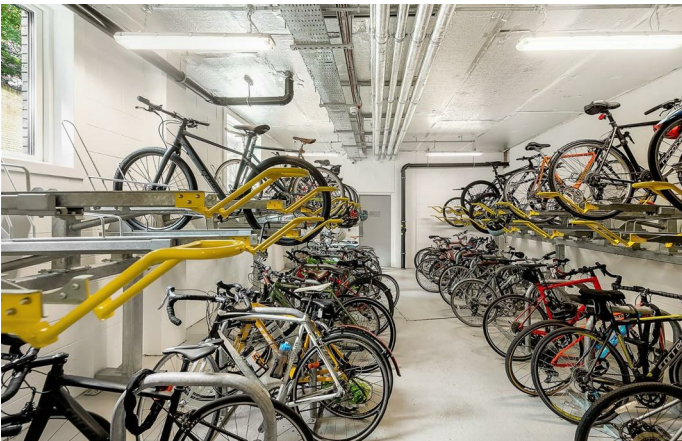
An outstanding two double bedroom, two bathroom flat with a private terrace and panoramic views of London, set on the 10th floor of a luxury building in the heart of Brixton with uninterrupted privacy. This magnificent home has 270-degree views from Wembley, Battersea, The Shard, City of London and back towards Crystal Palace. Floor-to-ceiling windows, glazed to the highest modern energy standards give natural light throughout. The open-plan reception has fantastic proportions, the lounge area is the ideal place to unwind whilst the contemporary kitchen is neatly arranged within sleek cabinetry, still allowing for a generous dining table. Sliding doors lead out to private terrace, a seamless flow to the best views in Brixton. Both bedrooms are sizeable doubles, with built in wardrobes and full-height windows, one enjoying an ensuite, and the other situated adjacent to the generous family bathroom, complete with both bath and shower. Other selling points include underfloor heating, Quartz composite worktops, built-in Bosch appliances, built-in storage, timber oak flooring and recessed downlighting. The building has lift access, a 10-year building warranty, secure bike storage and a large shared roof terrace with equally impressive views.

Council tax band D EPC rating B (85)

Features

- Two double bedrooms
- Two bathrooms
- Sought-after modern building
- Private roof terrace with 270-degree panoramic views
- Communal terrace, lift and bike storage
- Tucked away quietly on the 10th floor
- Bright and airy
- Central Brixton, moments from Brixton tube station and Brixton Village
- A short stroll to Brockwell Park

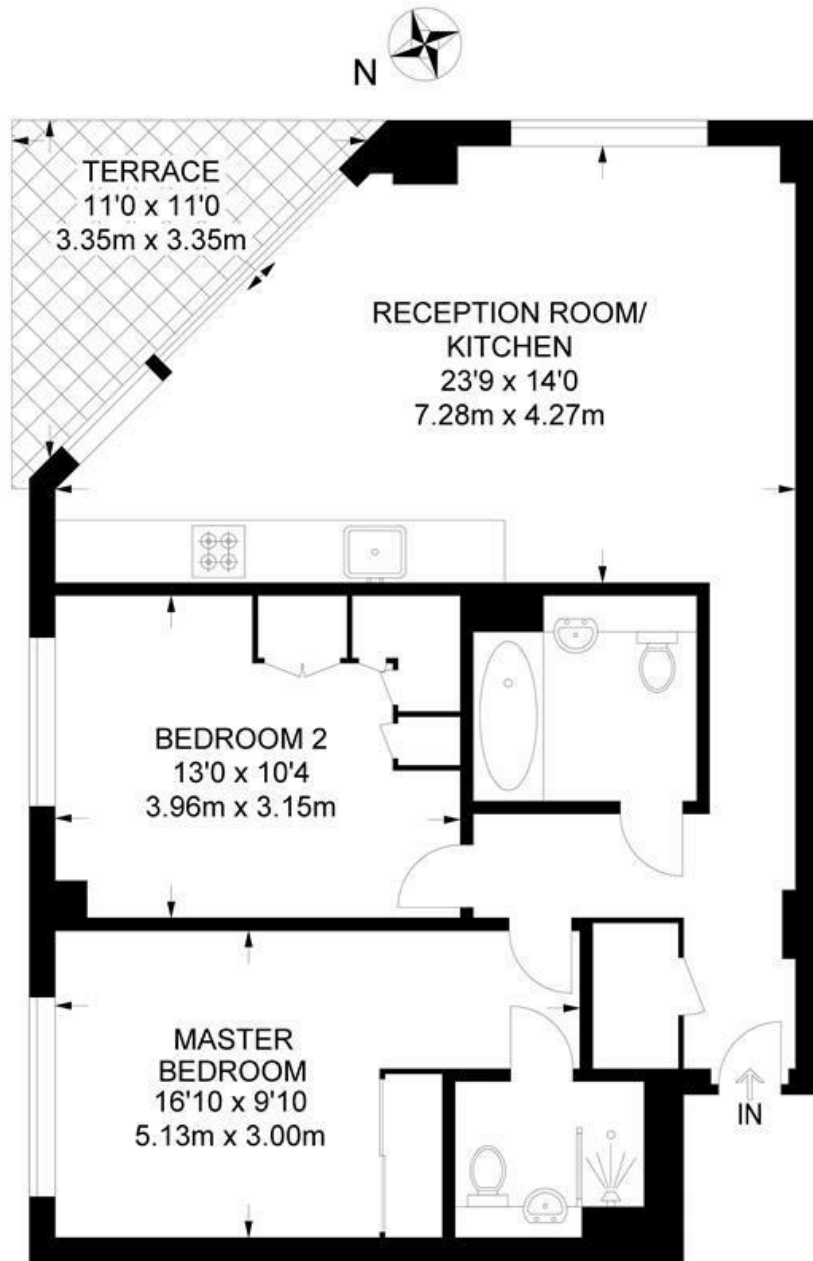




Brixton Hill, Brixton, SW2

Brixton Hill, SW2
2 Bedroom Flat

APPROXIMATE TOTAL INTERNAL AREA: **755 SQ FT / 70 SQ M**



TENTH FLOOR



While we try our very best, floor plans are produced as a guide only and we take no responsibility for the precise accuracy with which any property is represented.

Brixton Hill, Brixton, SW2

