

Santley Street, London, SW4

2 bedroom flat for sale

£599,950

Share of Freehold

Property Details

A beautifully-presented Victorian two double bedroom flat with a cellar and a private garden. The property is nestled on Santley Street which is an eight-minute walk to both Clapham and Brixton. The property comprises two comfortable double bedrooms, a modern bathroom, a cellar and a contemporary open-plan living room with double doors that open directly into the private garden. The property is a refreshing mix of contemporary design and characterful features. A neutral blank canvas with over 740 square feet of internal living space and ready for a new purchaser to move into hassle-free.

Features

- Private garden
- Cellar
- Victorian
- Characterful features
- Bright and airy throughout

Council tax band D EPC rating D (66)



K

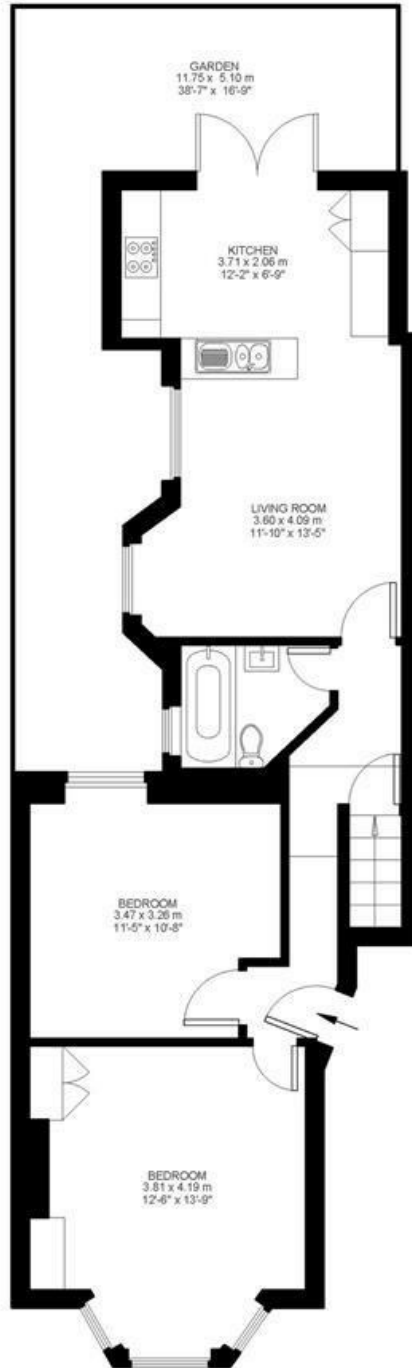
Santley Street

2 Bed Flat

Approx internal area:

740 sqft 69 sqm

While we do try our very best, floor plans are produced as a guide only and we take no responsibility for the precise accuracy with which any property is represented



Ground Floor



Basement



Santley Street, London, SW4

