



Christchurch Road, Brixton, SW2

1 bedroom flat - conversion for sale

£320,000

Share of Freehold

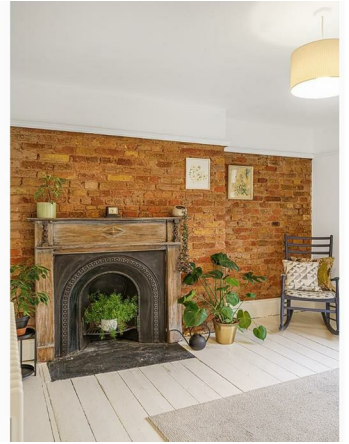
Property Details

Brimming with character and professionally redecorated, this one bedroom flat with a garden is on the second floor of a double fronted Victorian house located in a popular pocket with easy access to Tulse Hill, Herne Hill, Brixton and Streatham. The reception room boasts exposed brickwork framing the feature fireplace with large hardwood windows and original painted wooden floors. The kitchen is fully integrated, with bespoke oak veneer cabinetry and white Corian worktops. The bedroom is a generous double with a characterful fireplace and plush carpets. Completing the interior, the bathroom is stylishly presented with modern fixtures in traditional fashion inclusive of a roll top bath with claw feet, and over bath shower. The enormous garden is perfect for relishing the summer, whether with friends or a neighbour with whom this generous spot is shared. Of further benefit there is a communal loft space, an efficient managing agent who arranges a regular clean of hallways and windows, a building fire alarm system plus the flat has been fitted with new radiators and boiler in November 2022. Early registration of interest is advised.

Council tax band A EPC rating (null)

Features

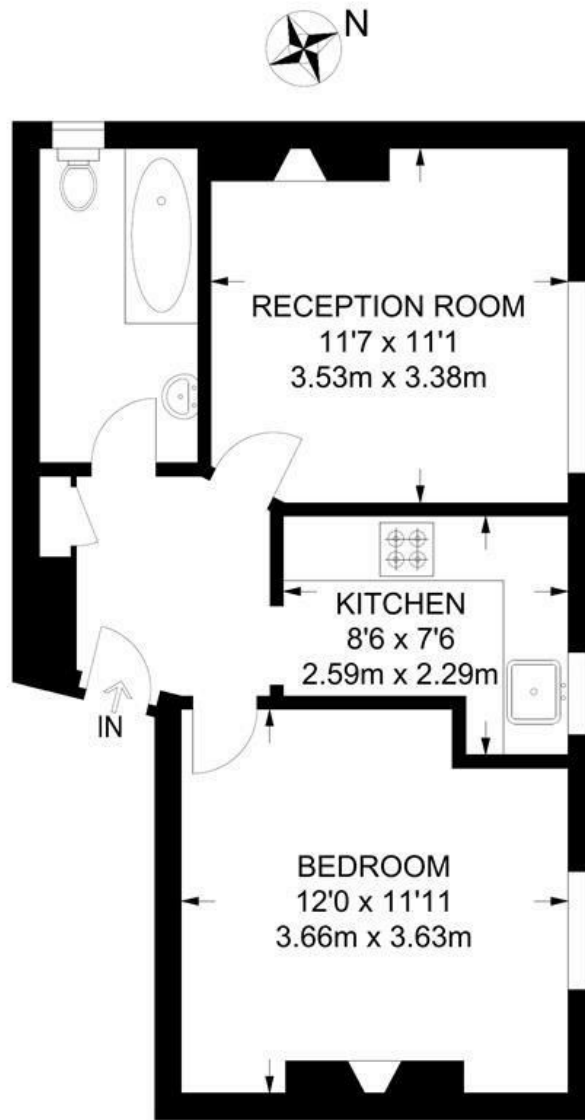
- One double bedroom
- Victorian conversion
- Large shared garden
- Recently redecorated
- Brimming with character
- Excellent transport links within a few minutes' walk
- Easy access to Herne Hill, Tulse Hill, Brixton, Streatham Hill and West Dulwich
- Short stroll to Brockwell Park
- Share of freehold
- Chain-free



Christchurch Road, Brixton, SW2

Christchurch Road, SW2
1 Bedroom Flat

APPROXIMATE TOTAL INTERNAL AREA: **425 SQ FT / 39.5 SQ M**



SECOND FLOOR



While we try our very best, floor plans are produced as a guide only and we take no responsibility for the precise accuracy with which any property is represented.

Christchurch Road, Brixton, SW2

