

Park Lofts, Lyham Road, London, SW2

2 bedroom maisonette for sale

£800,000

Share of Freehold

Property Details

Arranged over the initial floor of this home, a fantastic open-plan living space, packed with impactful features. Double-height, South-facing sash windows are highly impactful and flood the kitchen and reception with natural light, a fantastic entertaining space with plenty of room to cook and dine in style, complete with a stunning kitchen island and significant storage, as well as enough space for a large dining table if desired. The reception area is spacious yet cosy, making the most of the area nestled beneath the mezzanine level. Arranged over the mezzanine level and offering a beautiful airy atmosphere, one of the two generous double bedrooms, complete with significant storage and a stunning en-suite bathroom. The further bedroom is arranged over the most peaceful floor of the property and boasts a significant dressing room alongside a luxury bathroom, complete with a walk-in shower and a separate bathtub.

Council tax band E EPC rating C (74)

Features

- Two double bedrooms
- Two bathrooms
- Split over three levels
- 1450 square feet of internal space
- Double height ceilings
- Hugely unique and characterful property
- Neutral, luxurious finishes throughout
- Private, allocated parking
- Access to the Victoria and Northern tube lines
- Share of freehold & Chain-free



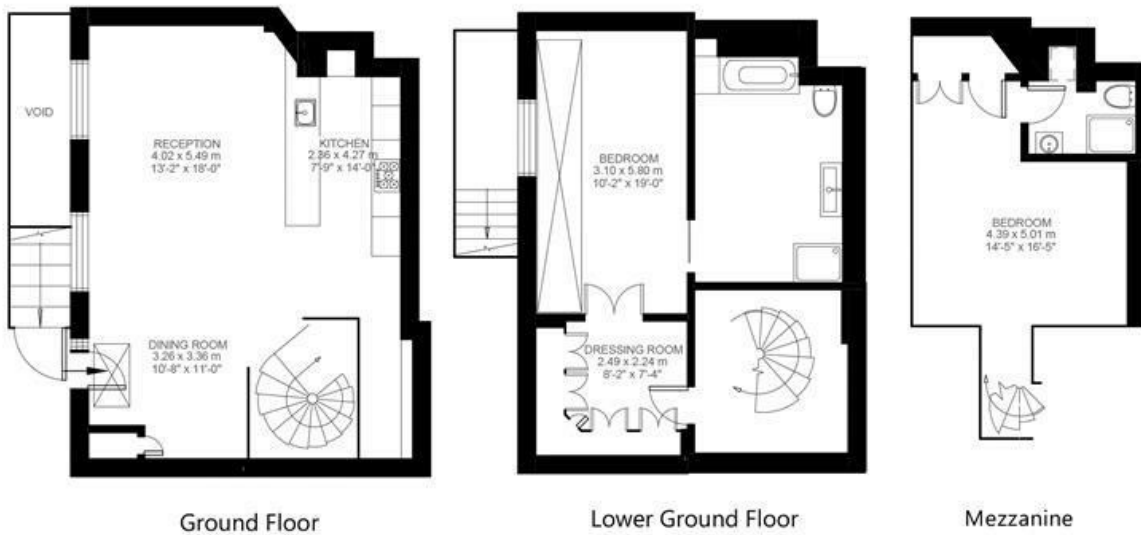


Park Lofts, Lyham Road, London, SW2

Lyham Road , Brixton , SW2

2 Bedroom Flat

Approximate internal area: 1450 sqft 135 sqm



While we do try our very best, floor plans are produced as a guide only and we take no responsibility for the precise accuracy with which any property is represented.

Park Lofts, Lyham Road, London, SW2

