



Lambert Road, Brixton, SW2

2 bedroom flat - conversion to let

£484 Per Week

Unfurnished

Property Details

A bright and spacious two double bedroom apartment securely nestled on the first and second floors of a grand semi-detached Victorian townhouse on a popular residential street tucked away quietly off Brixton Hill.

Arranged over the first floor, an attractive reception room offers generous dimensions to relax, dine and entertain, this room will be used on a regular basis. The modern, integrated kitchen has plenty of storage space with all you need in terms of mod cons and the flat has high ceilings throughout which contribute to the light and airy atmosphere in the property .

The first of the two double bedrooms is located adjacent, a bright and airy space with useful built-in storage options and a full-sized en-suite bathroom. The second bedroom occupies the floor above, complete with generous storage throughout, a further family-sized en-suite bathroom and multiple Velux windows flooding the space with natural light. With a generous square footage on offer and being split over two levels provides an appealing degree of separation between the two rooms, this fantastic property is decorated in tasteful and neutral tones throughout.

Located within walking distance to both Herne Hill and Brixton giving you the best of both worlds. Brixton tube station is a ten-minute walk and first stop on the Victoria line with super-fast links to

Council tax band D **EPC rating E (54)**

Features

- Two double bedrooms
- Two bathrooms
- Open plan reception
- Split-level
- Victorian conversion
- Bright and airy with high ceilings
- Local amenities within minutes
- Central Brixton in minutes



Lambert Road, Brixton, SW2

Lambert Road, Brixton, SW2

2 Bedroom Flat

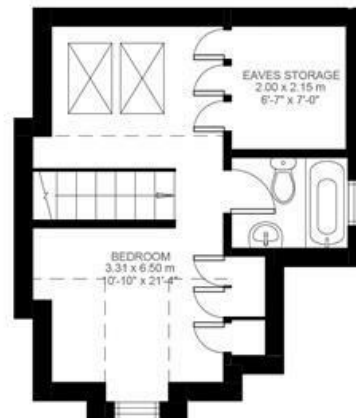
Approximate internal area: **917 sqft 85 sqm**

Approximate eaves storage: **46 sqft 4 sqm**

Approximate total internal area: **89 sqm 961 sqft**



Second Floor



Third Floor



While we do try our very best, floor plans are produced as a guide only and we take no responsibility for the precise accuracy with which any property is represented.

Lambert Road, Brixton, SW2

