

Herne Hill, London, SE24

2 bedroom flat for sale

£625,000

Share of Freehold

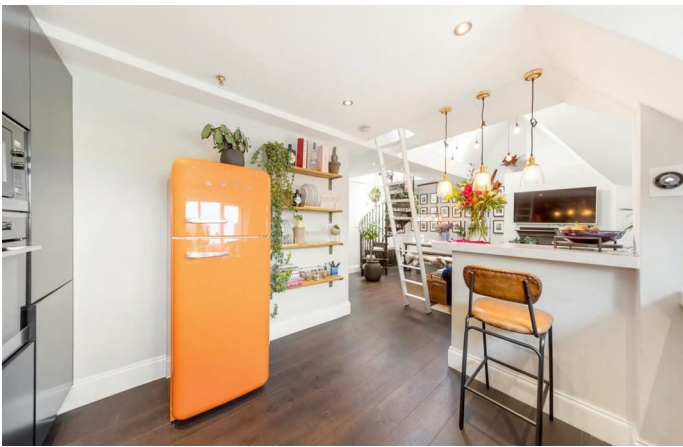
Property Details

A stunning 750 square foot apartment in this attractive Victorian conversion with a private roof terrace that has 360 degree views. This tastefully decorated apartment has vaulted ceilings, characterful features with a central spiral staircase, solid wood floors, state of the art appliances in the contemporary open plan kitchen and a luxury bathroom. The two double bedrooms feed off the hallway and there is the added bonus of a mezzanine area above the reception with a multitude of different potential uses. Herne Hill station is a six minute walk and North Dulwich station is eight minutes away.

Features

- Roof terrace
- Victorian
- Characterful features
- Mezzanine level
- Bright and airy throughout
- Close to Brockwell park

Council tax band C EPC rating E (53)



K

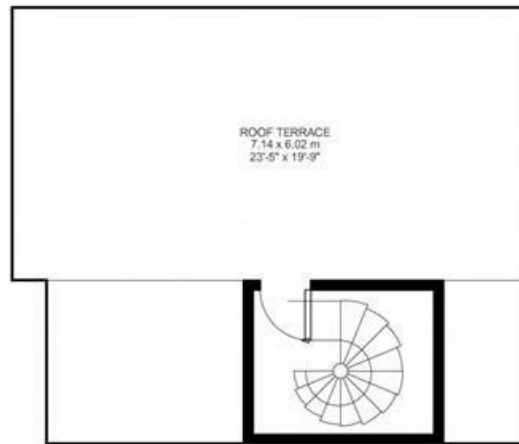
Herne Hill

3 Bed flat

Approx internal area:

751 sqft 70 sqm

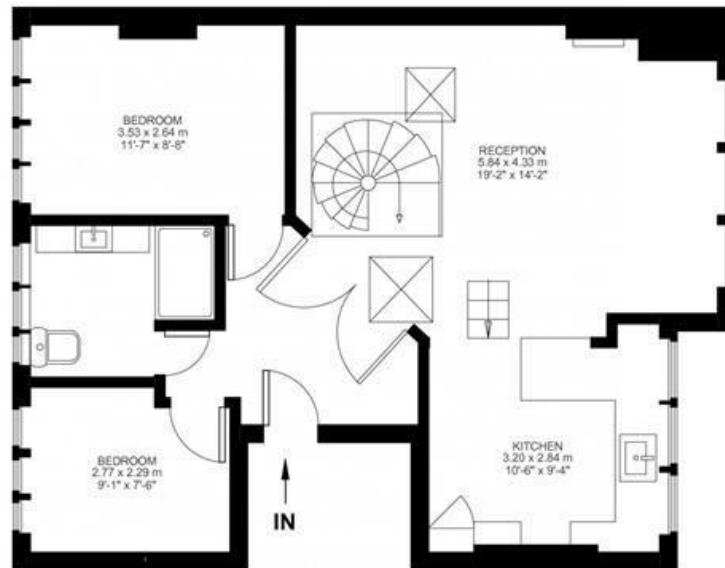
While we do try our very best, floor plans are produced as a guide only and we take no responsibility for the precise accuracy with which any property is represented



Roof Terrace



Mezzanine



Top Floor



Herne Hill, London, SE24

