

Dalyell Road, Brixton, SW9

3 bedroom flat - conversion for sale

£649,950

Share of Freehold

Property Details

A characterful split level, three double bedroom Victorian apartment perfectly positioned on Dalyell Road, a desirable street in the ever-popular SW9 triangle of Brixton (6-minute walk), Stockwell (8-minute walk) and Clapham (9-minute walk). With 950 square feet of internal living space, plus the fantastic addition of a large demised loft space, the property offers generous proportions throughout and has the potential to be extended into the loft (subject to the necessary permissions) – the layout is versatile and can be altered to suit the purchaser's own requirements.

Features

- Three double bedrooms
- Victorian
- Bright and airy throughout
- Close to transport links
- Sought after location
- Substantial demised loft
- Share of freehold

Council tax band D EPC rating (null)



Dalyell Road, Brixton, SW9

K

3 Bed flat

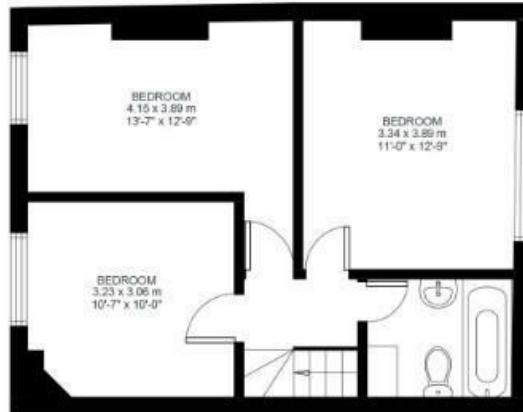
Approx internal area:

951 sqft 88 sqm

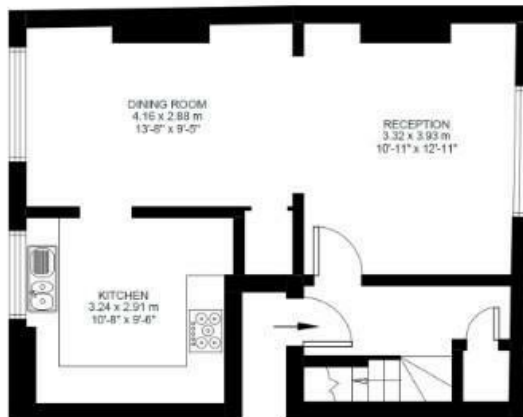
(EXCLUDING LOFT)
LOFT 47.23 SQ.M / 508 SQ.FT
INCLUSIVE TOTAL AREA
135.27 SQ.M / 1456 SQ.FT

While we do try our very best,
floor plans are produced as a
guide only and we take no
responsibility for the precise
accuracy with which any
property is represented

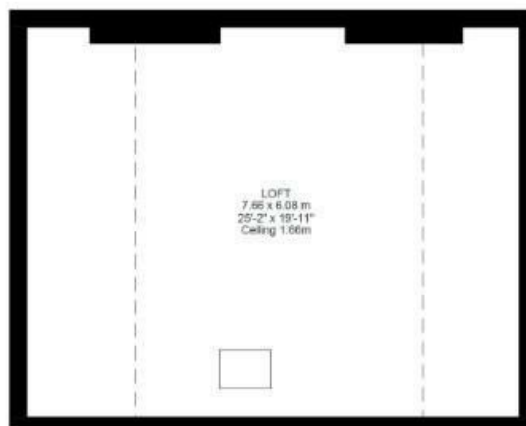
Dalyell Road



Second Floor



First Floor



Dalyell Road, Brixton, SW9

