



Kings Avenue, Clapham, SW4

2 bedroom flat - purpose built for sale

£375,000

Leasehold

Property Details

A smartly presented two double bedroom purpose built flat with gardens and unallocated parking, arranged over the first floor and set back from the street on the conveniently located Kings Avenue. The reception is sure to be the heart of the home, with proportions to both lounge and dine a large window and parquet flooring. A separate kitchen with fresh contemporary styling is well equipped with plenty of storage options and surface space with pretty views over the garden. The two bedrooms are comfortable doubles, set to either side of the flat to provide a desirable level of privacy. The interior is completed by a modern family-sized bathroom, equipped with both bath and shower with trendy finishes. There is a large and peaceful communal garden with maintenance included for fuss-free enjoyment. Only four stories tall, the block is well cared for and offers a pleasant community feel, set quietly back from the road behind shrubs with a secure entrance and unallocated but freely available off-street parking. Early registration of interest is advised.

Council tax band C EPC rating C (75)

Features

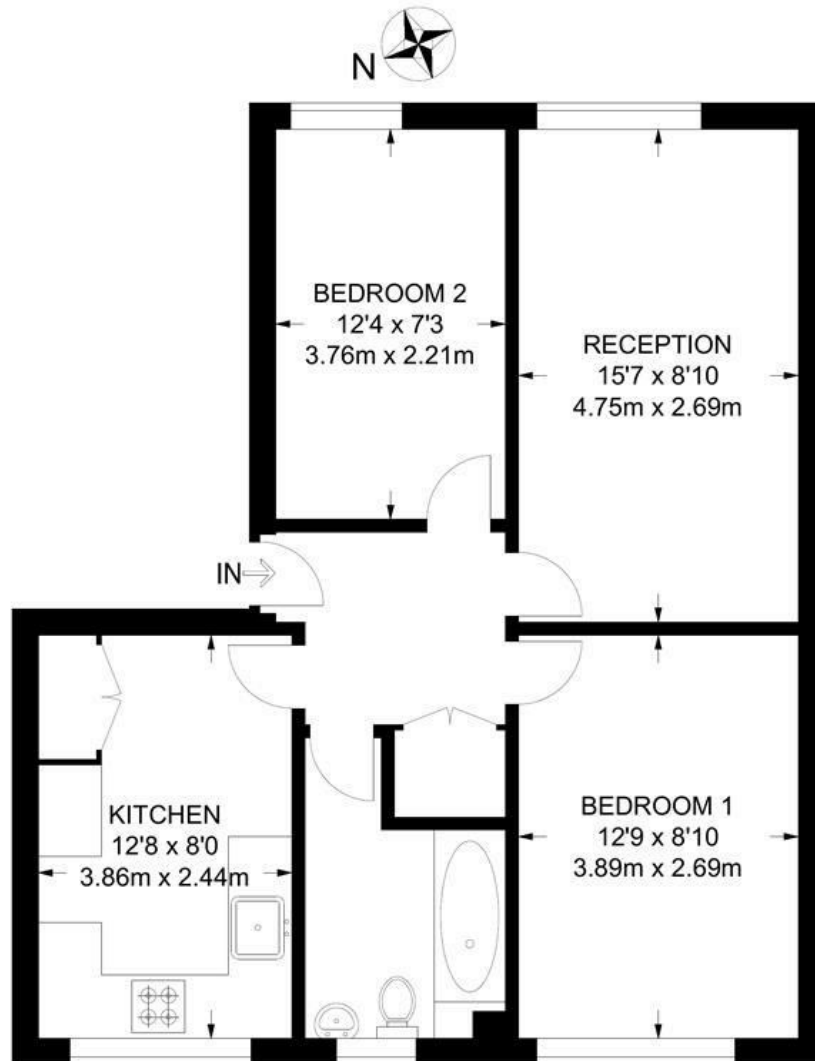
- Two double bedrooms
- Communal gardens
- Unallocated parking
- Secure purpose built
- Quietly set back from the street
- Well-presented throughout
- Local amenities of Kings Avenue and Acre Lane
- Abbeville Village a twelve-minute walk
- Ideal location within minutes of Clapham and Brixton
- Access to Northern & Victoria Lines



Kings Avenue, Clapham, SW4

Kings Avenue, SW4
2 Bedroom Flat

APPROXIMATE GROSS INTERNAL AREA: **570 SQ FT / 52.9 SQ M**



FIRST FLOOR



While we try our very best, floor plans are produced as a guide only and we take no responsibility for the precise accuracy with which any property is represented.

Kings Avenue, Clapham, SW4

