



**Dalberg Road, London, SW2**

2 bedroom flat for sale

**£650,000**

Share of Freehold

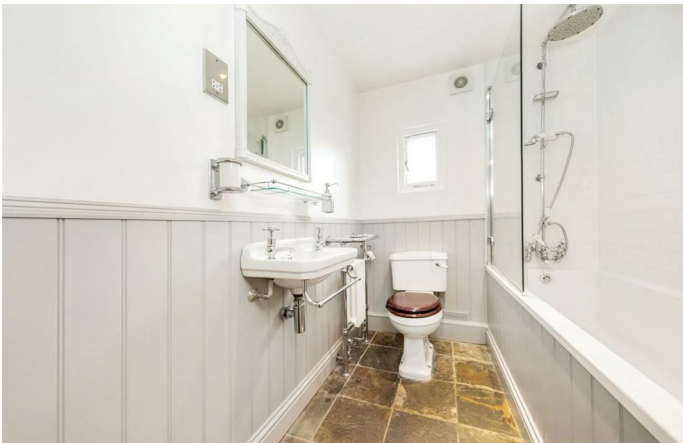
## Property Details

A split level, two bed, two bath garden flat nestled on an attractive road, a five-minute stroll from central Brixton and a ten-minute walk to Herne Hill. The internal space is split over two floors with over 900 square feet of internal space. The property comprises a dual-aspect reception and dining room, a galley kitchen diner, two modern bathrooms, two double bedrooms, a cellar and a South-West facing garden. Dalberg Road is a highly sought-after and quiet street, in an extremely popular pocket of roads between Brixton and Herne Hill. Brockwell Park is also located at the end of the road.

## Features

- Private garden
- Victorian
- Split-level
- Sought after location
- Close to Brockwell park

Council tax band C    EPC rating E (48)





# Dalberg Road

# K

2 Bed flat

Approx internal area:

**926 sqft 86 sqm**

While we do try our very best, floor plans are produced as a guide only and we take no responsibility for the precise accuracy with which any property is represented



First Floor



Basement



Ground Floor



Dalberg Road, London, SW2

