

**Abbeville Road, Clapham, SW4**

1 bedroom flat to let

**£400 Per Week**

Furnished

## Property Details

**\*\*VIDEO TOUR AVAILABLE UPON REQUEST\*\*** A well presented Victorian conversion top floor flat located within the popular Abbeville Village. Set close to Clapham High street, all the local bars, restaurants, local tube and train stations and the Common, the area has a lot to offer. The property itself boasts an open plan modern fitted kitchen/reception room, a modern bathroom suite and a spacious bedroom.

## Features

- One double bedroom
- Open plan reception and kitchen
- Modern bathroom suite
- Victorian conversion
- Light and airy
- Close to transport links

Council tax band D      EPC rating D (61)



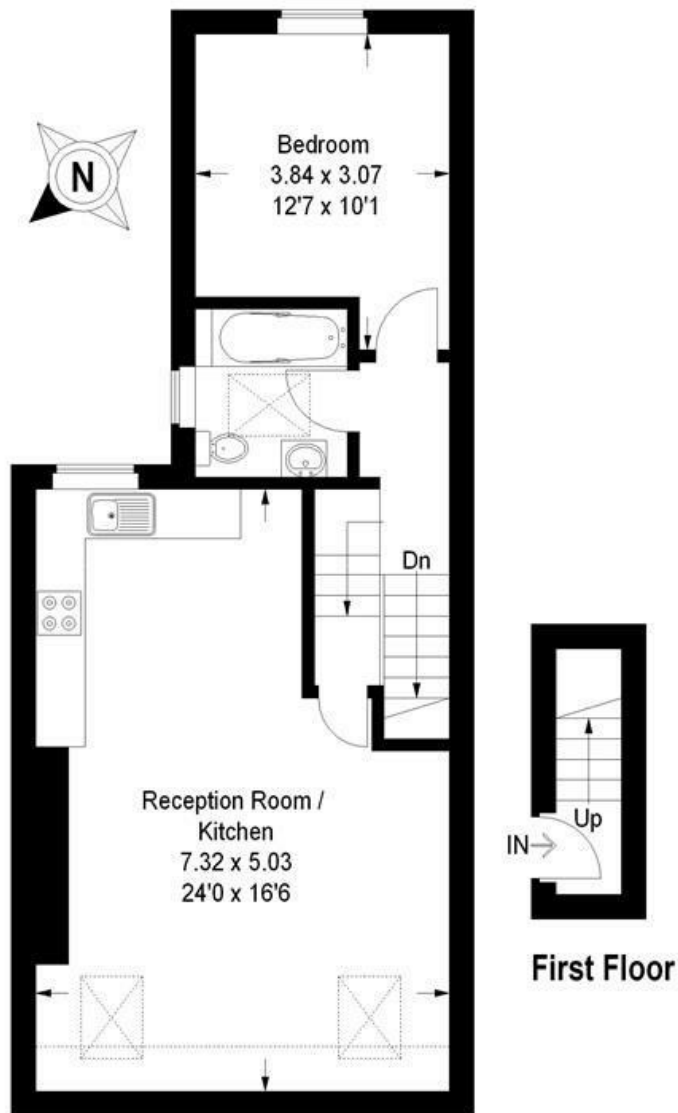
## Abbeville Road, SW4

Approximate Gross Internal Area


First Floor = 2.6 sq m / 28 sq ft

Second Floor = 54.3 sq m / 584 sq ft

Total = 56.9 sq m / 612 sq ft



### Second Floor

 = Reduced headroom below 1.5 m / 5'0'

This plan is for layout guidance only. Not drawn to scale unless stated. Windows and door openings are approximate. Whilst every care is taken in the preparation of this plan, please check all dimensions, shapes and compass bearings before making any decisions reliant upon them. (ID201921)

Abbeville Road, Clapham, SW4

