



## Beta Place, Clapham, SW4

2 bedroom flat - conversion for sale

£650,000

Leasehold

### Property Details

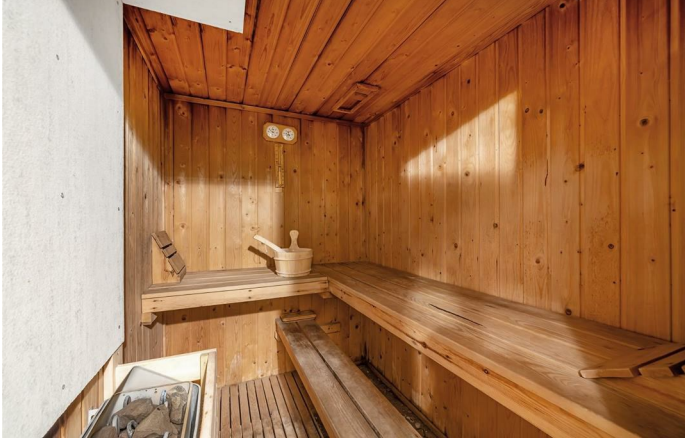
A unique two double bedroom apartment, on the third floor of a secure gated Grade II-listed Victorian school conversion. Beta Place is a highly sought-after community tucked away within extensive grounds, close to both Clapham and Brixton. Recently renovated, the flat offers amazing views of London landmarks. The reception is neutral yet characterful with significant space to lounge. The dine-in kitchen is contemporary whilst retaining the wonderful period character of an impressive arched window for dinner table views next to the brand new integrated kitchen. The principal bedroom benefits from fitted wardrobes, whilst the second double bedroom has a skylight ideal for star gazing. The new bathroom is luxurious with a rain shower and airing cupboard. Of further benefit within this charming converted school is easily obtained off-street parking by renting a space from the neighbours of this pet-friendly development which boasts a nighbourly atmosphere and an on-site gym and sauna. With impressive proportions inside and out plus an enviable location with amenities to cater for all tastes, this property is sure to appeal to a wide range of purchasers.

### Features

- Two double bedrooms
- Grade II-listed Victorian school conversion
- Recently refurbished throughout
- Gym and sauna on-site
- Expansive communal grounds
- Sought-after gated community
- Characterful features
- Over 800 square feet of internal space
- A ten-minute stroll to both Clapham and Brixton centres
- Northern and Victoria Lines

Council tax band E    EPC rating D (68)

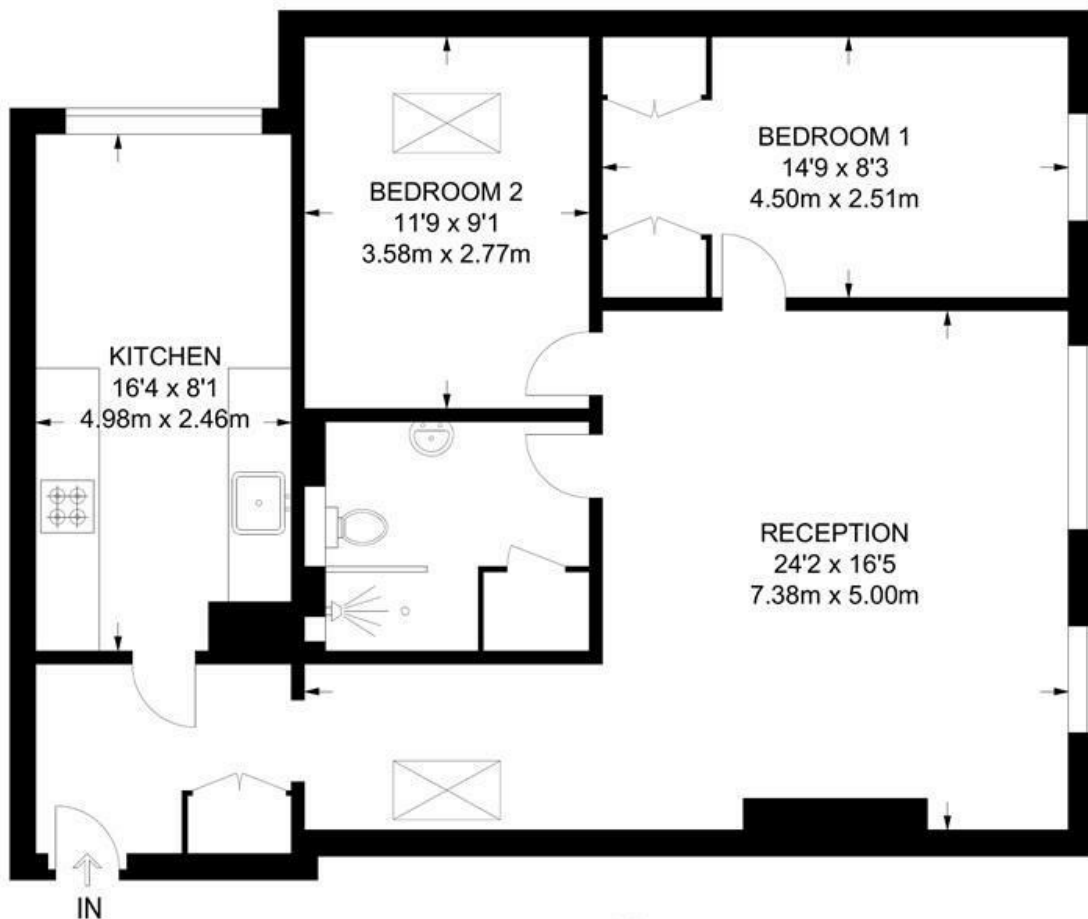




Beta Place, Clapham, SW4

**Beta Place, SW4**  
**2 Bedroom Flat**

APPROXIMATE GROSS INTERNAL AREA: **830 SQ FT / 77.1 SQ M**



**THIRD FLOOR**



While we try our very best, floor plans are produced as a guide only and we take no responsibility for the precise accuracy with which any property is represented.

Beta Place, Clapham, SW4

