



Arlingford Road, Brixton, SW2

1 bedroom flat to let

£415 Per Week

Furnished

Property Details

A perfectly located one double bedroom garden flat, in a pretty Victorian conversion, a short walk to all that Brixton has to offer and situated next to Brockwell Park. The property comprises a well-proportioned reception room, a stylish eat-in kitchen, a comfortable double bedroom, a contemporary bathroom and a private patio garden. This handsome, Victorian end of terrace is nestled on Arlingford Road, a quiet residential street located a ten-minute walk to Brixton tube station and the amenities in Herne Hill are also a pleasant ten-minute stroll through Brockwell Park.

Features

- Private garden
- Victorian
- Bright and airy throughout
- Sought after location
- Close to Brockwell Park

Council tax band C EPC rating D (55)

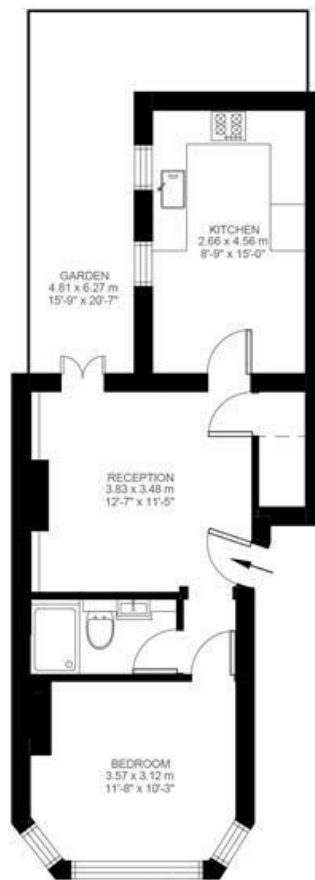


Arlingford Road, Brixton, SW2

Arlington Road, Brixton, SW2

1 Bedroom Flat

Approximate internal area: **478 sqft 44 sqm**



Ground Floor



While we do try our very best, floor plans are produced as a guide only and we take no responsibility for the precise accuracy with which any property is represented.

Arlingford Road, Brixton, SW2

