



St. Gerards Close, Clapham, SW4

1 bedroom flat for sale

£425,000

Leasehold

Property Details

Over 500 square feet has been utilised considerably, providing generous room dimensions, comfortable living space and handy storage options. The heart of the home is the spacious reception, providing a cosy living area and room to dine, leading through to a semi-open plan kitchen offering generous surface area and storage options. Ideal for hosting guests and entertaining, this lovely space provides an appealing and inviting atmosphere. The bedroom at the rear is peacefully tucked away overlooking the manicured rear gardens and is flooded with natural light thanks to it's Southerly aspect.

Council tax band C EPC rating C (71)

Features

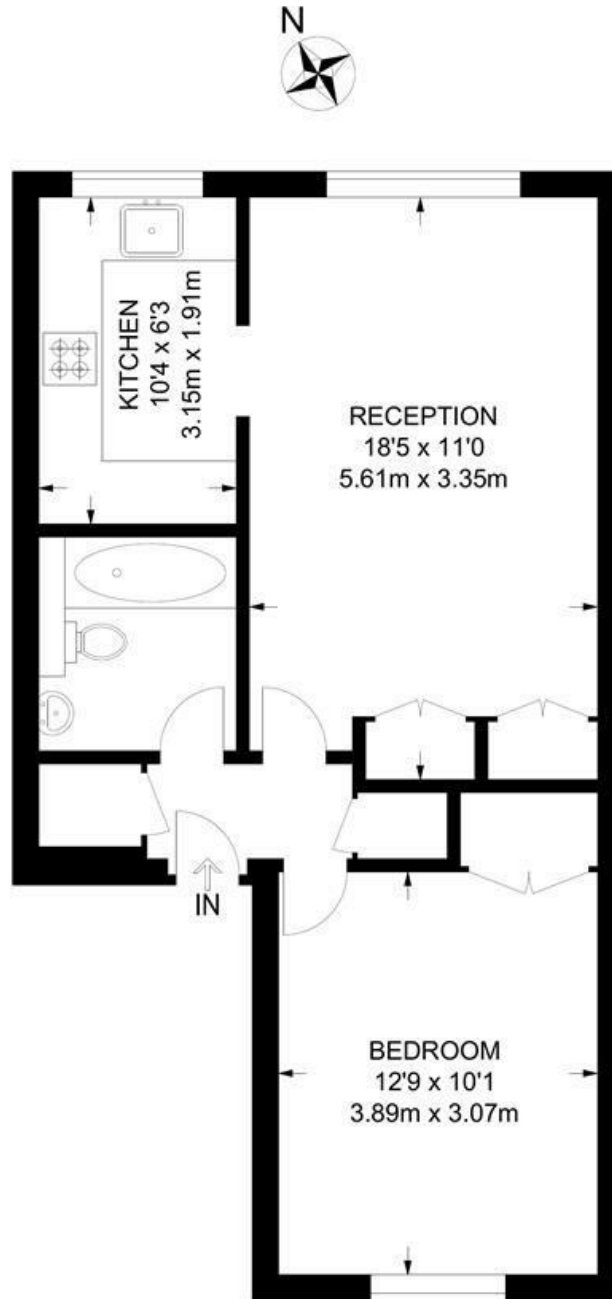
- One bedroom
- Ground floor
- Contemporary purpose-built flat
- Allocated bay parking
- Over 500 square feet
- Bike parking
- Communal garden
- Clapham Common
- Northern Line at Clapham Common and Clapham South
- Chain-free



St. Gerards Close, Clapham, SW4

St Gerards Close, SW4
1 Bedroom Flat

APPROXIMATE GROSS INTERNAL AREA: **502 SQ FT / 46.6 SQ M**



GROUND FLOOR



While we try our very best, floor plans are produced as a guide only and we take no responsibility for the precise accuracy with which any property is represented.

St. Gerards Close, Clapham, SW4

