



Queenswood Court, Kings Avenue, SW4

2 bedroom flat to let

£530 Per Week

Part furnished

Property Details

A stunning, spacious and bright two bedroom flat in beautiful period mansion block - situated around a twenty minute walk from both Brixton and Herne Hill stations. This lovely flat comprises a large reception space leading off into a hallway, a kitchen, two generous double bedroom and a sleek family sized bathroom. Living here, you will be a walk away from the buzz of vibrant Clapham high street and popular Clapham Common.

Features

- 2 Double bedrooms
- Good transport links
- Close to Clapham common
- Light and airy
- Period building

Council tax band E EPC rating E (52)





Kings Avenue

2 Bedroom Flat

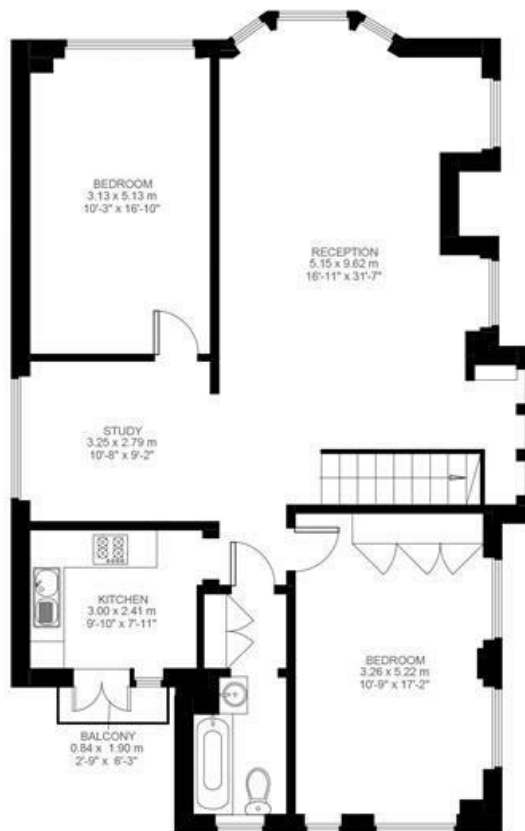
Approx internal area:

1084 sqft 101 sqm

While we do try our very best, floor plans are produced as a guide only and we take no responsibility for the precise accuracy with which any property is represented



Third Floor



Fourth Floor



Queenswood Court, Kings Avenue, SW4

