

**Josephine Avenue, SW2**

1 bedroom flat to let

**£426 Per Week**

Unfurnished

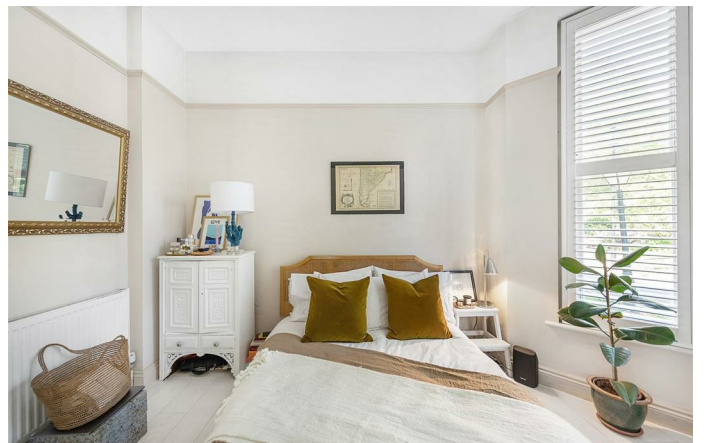
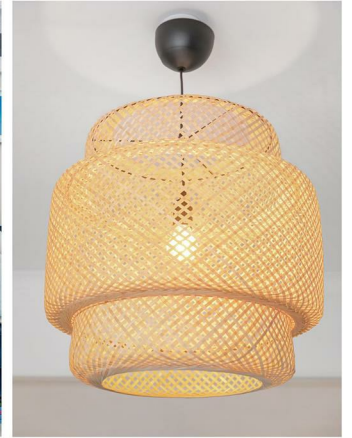
## Property Details

Keating Estates are proud to present this luxury one double bedroom flat with shared communal garden located within Brixton's most cherished conservation area. The property has the design team's signature architectural finish, attention to detail, period elegance and luxury. The flat comprises of a double bedroom, high spec bathroom, an open plan kitchen area with views out across Josephine Avenue. The property has the benefit of an added beautiful landscaped communal garden with secure bike storage which all adds to the leafy feel of this protected area right in the heart of the thriving and trendy Brixton. Josephine Avenue is only 3 minutes from Brockwell Park (lauded as London's best outdoor space by locals). 30 seconds from Sainsbury's supermarket, an 8-minute walk from Brixton Tube and Train Station giving you access to the Victoria line straight into the City.

**Council tax band D**     **EPC rating D (68)**

## Features

- One double bedroom
- Open plan
- Shared communal gardens
- Light and Airy
- Close to transport links
- Close to Brockwell Park





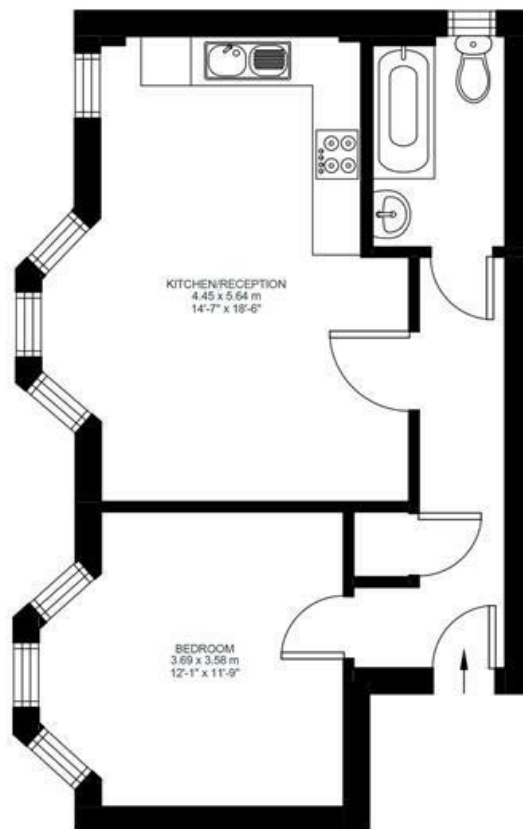
## Josephine Avenue

### 1 Bed Flat

Approx internal area:

**496 sqft 46 sqm**

While we do try our very best, floor plans are produced as a guide only and we take no responsibility for the precise accuracy with which any property is represented



Ground Floor



Josephine Avenue, SW2

