



**Railton Road, Herne Hill, SE24**

1 bedroom flat to let

**£380 Per Week**

Furnished

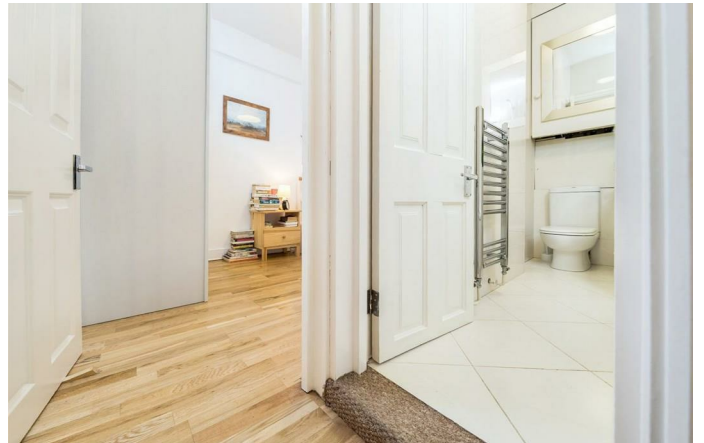
## Property Details

This lovely one bedroom top floor flat in a Victorian conversion flat located within walking distance of both Brixton and Herne Hill train stations which gives you direct access straight into the city, Brockwell park is also only a few minutes away and is one of London's most picturesque parks with the manor house, tennis courts, lido and gym. The flat comprises of an open plan kitchen reception area with a wonderful feature fireplace, a spacious double bedroom and lovely modern bathroom.

## Features

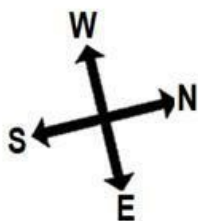
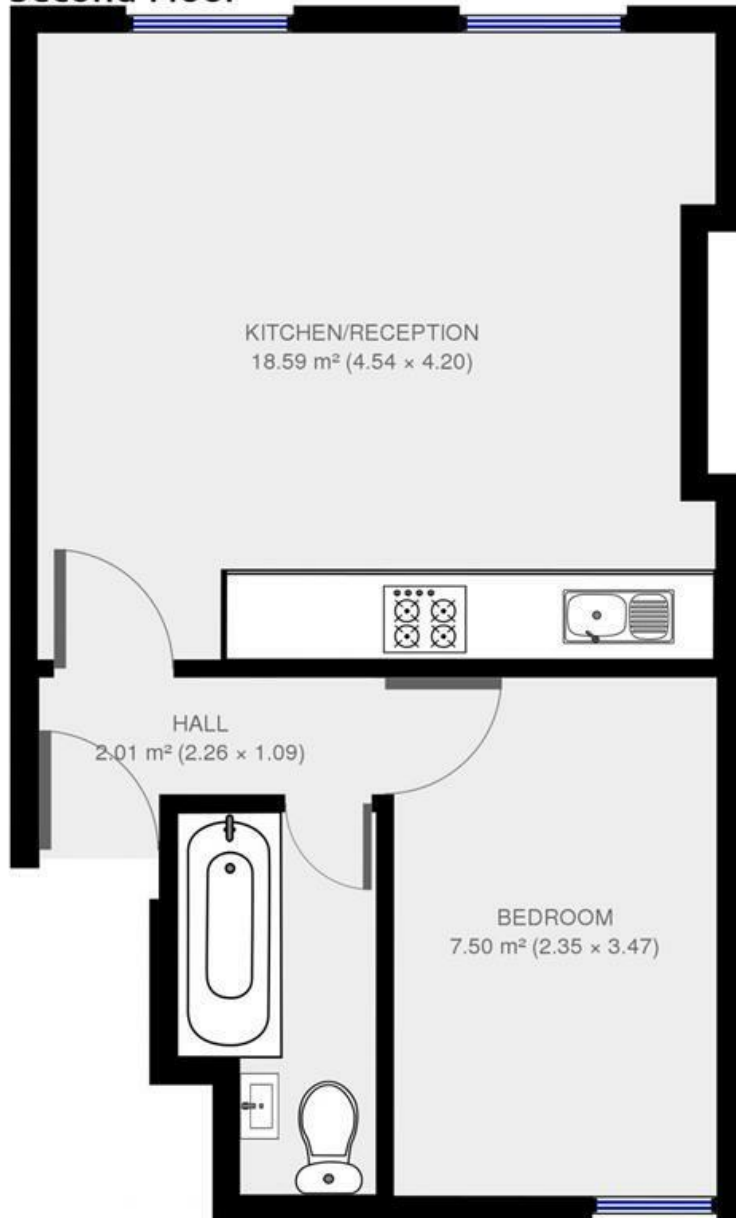
- One Bedroom
- Victorian
- Light and airy
- Open plan kitchen/living
- Under a 12 minute walk to Brixton Station
- Perfect for a couple or solo professional

Council tax band B    EPC rating C (72)



## Railton Road

### Second Floor



1 bed flat.

Approx internal area:

323 sqft 30 sqm

While we do try our very best, floor plans are produced as a guide only and we take no responsibility for the precise accuracy with which any property is represented

Railton Road, Herne Hill, SE24

