



Trelawn Road, SW2

4 bedroom house to let

£926 Per Week

Furnished

Property Details

A stunning four double bedroom house -situated between the leafy Herne Hill and vibrant Brixton. This striking house is split over three levels and comprises a bright open plan kitchen reception room, a modern kitchen with ample storage and a bright and spacious reception area that seamlessly flows out into a beautiful private garden-ideal for the summer months. On the first level, you'll find one of the two family size bathrooms, two spacious double bedrooms and a separate study room. On the second level you'll find the further two double bedrooms and the further family size bathroom. Living here, the celebrated Herne Hill establishments are close-by and the restaurants and shops within the lauded Brixton Village, the amenities of the high street and Brixton Station are all a 10-minute stroll away.

Features

- Close to Brockwell Park
- Close to Travel Links
- Edwardian
- 4 double Bedrooms
- Separate Study
- Light and Airy
- Private Garden

Council tax band E EPC rating D (67)



Trelawn Road, SW2

K

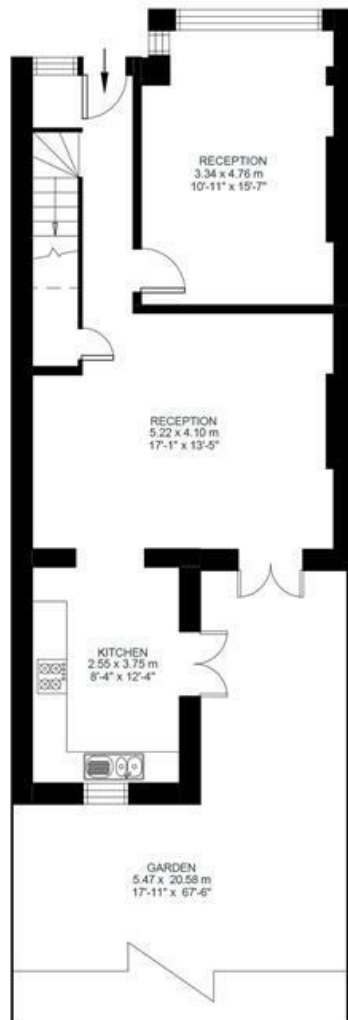
4 Bed House

Approx internal area:

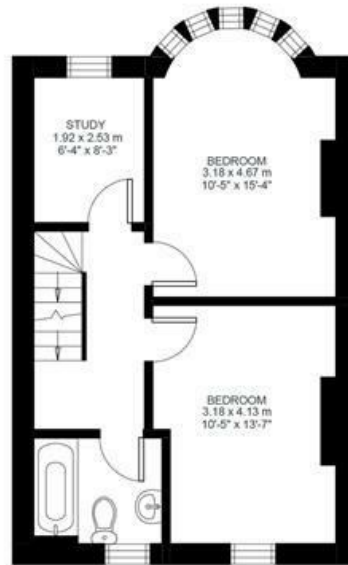
1455 sqft 135 sqm

While we do try our very best, floor plans are produced as a guide only and we take no responsibility for the precise accuracy with which any property is represented

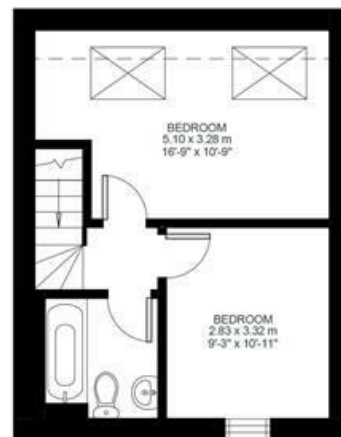
Trelawn Road



Ground Floor



First Floor



Second Floor



Trelawn Road, SW2

