



**Beechdale Road, Brixton, SW2**

2 bedroom flat - conversion for sale

**£435,000**

Share of Freehold

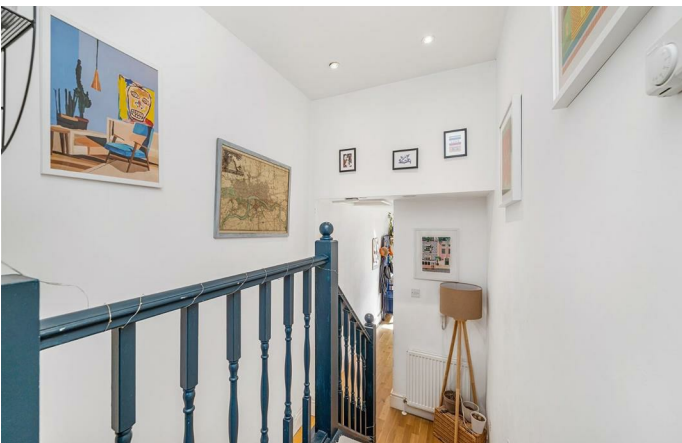
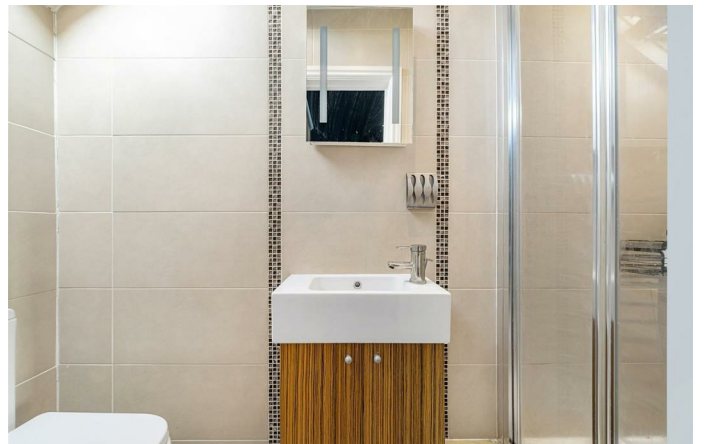
## Property Details

A bright and charming two double bedroom flat residing over the top floor of an attractive Victorian converted house on the desirable Beechdale Road. This wonderful property is quietly located in a popular residential pocket close to Central Brixton, Brockwell Park and the amenities of trendy Brixton Hill. The open-plan reception is an airy heart of the home, with dimensions to lounge, dine and cook the room is stylishly finished, ideal for hosting. Green kitchen cabinetry offer ample storage, topped with work surfaces which wrap around into a breakfast bar. The principal bedroom is a comfortable double, with an en-suite and eaves storage. Still a genuine double, the second bedroom is currently being used as a separate lounge yet could be repurposed back into a rentable room. The main bathroom has both bath and shower plus integrated shelving. There are two additional storage cupboards in the hallway. All in all, a gem of an apartment with a versatile layout and fantastic location, early registration of interest is strongly advised. Share of freehold.

## Features

- Two double bedrooms
- Two bathrooms
- Victorian conversion
- 625 square feet of internal space
- Quiet, popular residential street
- Local amenities of Brixton Hill
- Brockwell Park a five-minute stroll
- Brixton and Herne Hill both a short walk away
- Excellent transport links including Victoria Line, Thames Link and Trains
- Chain-free

Council tax band C      EPC rating C (76)



Beechdale Road, Brixton, SW2

**Beechdale Road, SW2**  
**2 Bedroom Flat**

APPROXIMATE GROSS INTERNAL AREA: **625 SQ FT / 58 SQ M**



While we try our very best, floor plans are produced as a guide only and we take no responsibility for the precise accuracy with which any property is represented.

Beechdale Road, Brixton, SW2

