

Kellett Road, Brixton, SW2

2 bedroom flat - conversion to let

£460 Per Week

Furnished

Property Details

A spacious split-level two double bedroom apartment occupying the upper floors of a Victorian house - situated in central Brixton.

Features

- Two double bedrooms
- Victorian conversion
- Split over two floors
- Open plan kitchen / reception
- Within a five-minute walk to Brixton tube station
- Brockwell Park is a seven-minute stroll

Council tax band C EPC rating C (70)



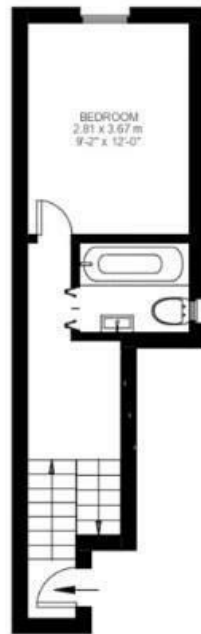
Kellett Road

K

2 Bedroom Flat
Approx internal area:

646 sqft 60 sqm

While we do try our very best, floor plans are produced as a guide only and we take no responsibility for the precise accuracy with which any property is represented



First Floor



Second Floor



Kellett Road, Brixton, SW2

