



Josephine Avenue, Brixton, SW2

1 bedroom flat for sale

£500,000

Leasehold

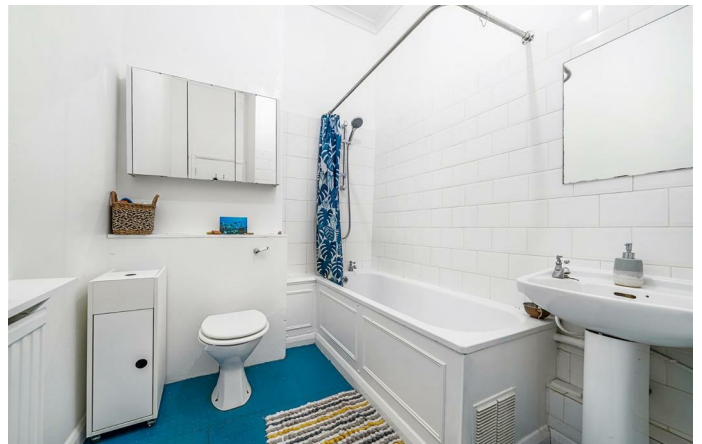
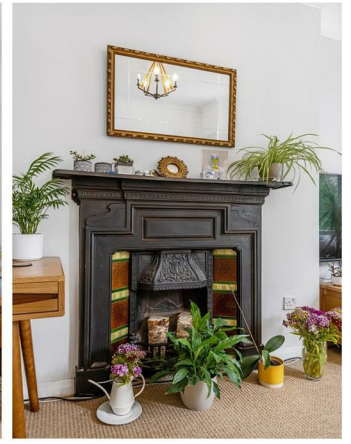
Property Details

A delightful one double bedroom garden flat, set over the raised ground floor of a Victorian house on the desirable Josephine Avenue with local amenities on the doorstep, near Brockwell Park, a short walk to central Brixton and Herne Hill. Retained period features, generous dimensions and an appealing layout, create an airy, spacious and homely feel. The charming reception room has sizeable proportions in which to relax and dine with space for a home office. Boasting a feature fireplace, high corniced ceilings plus a large bay window overlooking the tree-lined avenue, bathing the room with light. A separate kitchen has sleek wooden cabinets offering plenty of storage, topped with wooden surfaces, perfect for cooking with views over the garden. Relishing the same garden views, the double bedroom is quietly nestled to the rear with built in storage plus ample space for wardrobes and additional storage options. The bathroom is equipped with both bath and shower with mirrored storage. The private garden is a peaceful spot surrounded by greenery, ideal for relaxing and hosting BBQs. Early registration of interest advised.

Features

- One double bedroom
- Private garden
- Victorian conversion
- Sought-after Josephine Avenue
- Separate reception and kitchen
- Characterful features
- Local amenities of Brixton Hill
- Central Brixton a ten-minute stroll
- Brockwell Park moments from the end of the avenue
- Herne Hill a twelve-minute walk

Council tax band C EPC rating C (70)



Josephine Avenue, Brixton, SW2

Josephine Avenue, SW2
1 Bedroom Flat

APPROXIMATE GROSS INTERNAL AREA: **645 SQ FT / 60 SQ M**



While we try our very best, floor plans are produced as a guide only and we take no responsibility for the precise accuracy with which any property is represented.

Josephine Avenue, Brixton, SW2

