

**Josephine Avenue, Brixton, SW2**

3 bedroom flat to let

**£646 Per Week**

Furnished

## Property Details

A luxury three bedroom, split level flat on the lovely little street - tucked away within walking distance of Brockwell Park. This wonderful flat comprises of three spacious double bedrooms, an open plan kitchen reception room filled with characterful features such as a period fireplace and original wooden flooring, an ensuite bathroom and a sleek modern family bathroom. Living here you will be within walking distance of Brixton High Street , boasting a plethora of shops , bars and restaurants.

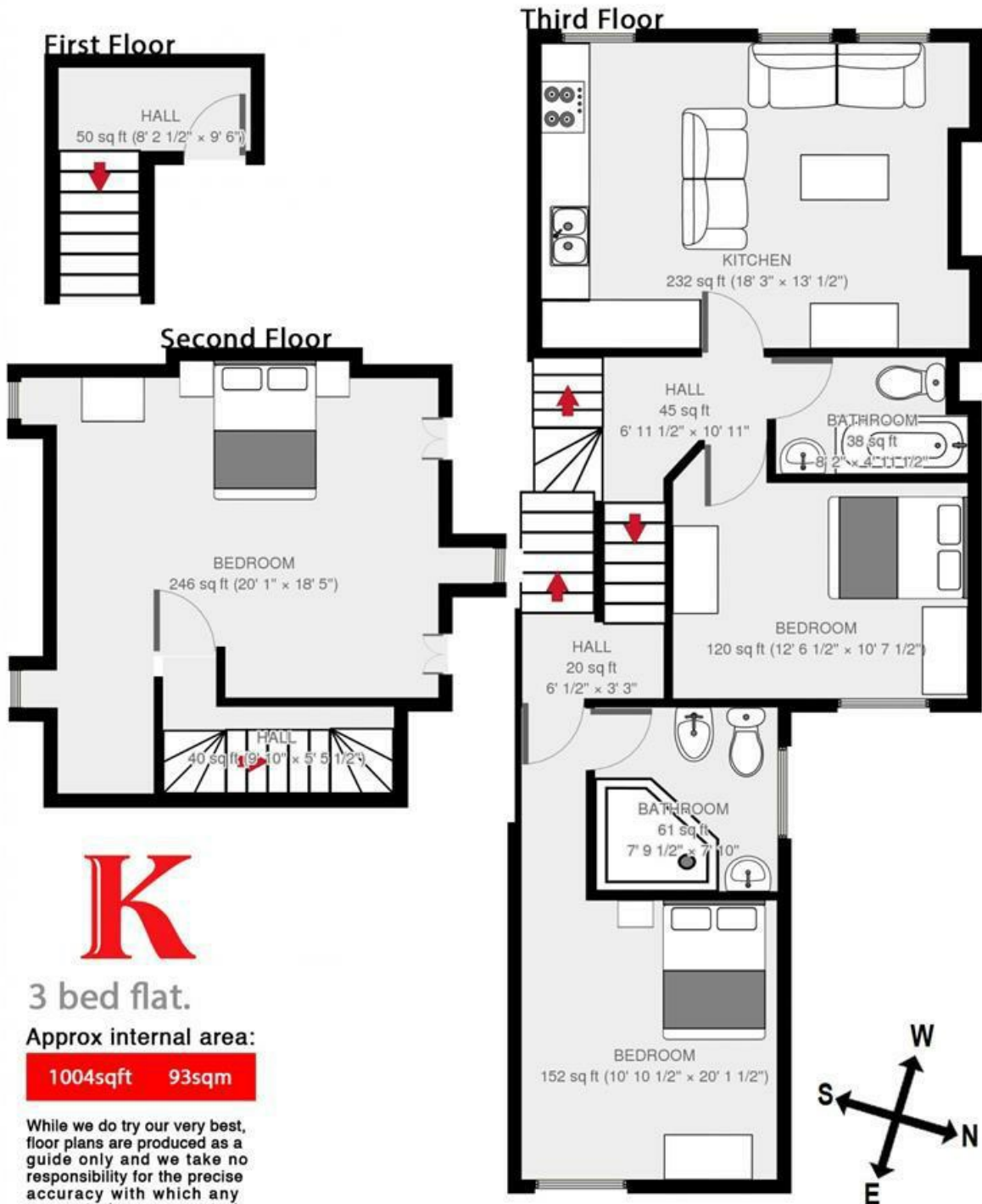
## Features

- Stylish split level flat
- Bright and airy throughout
- Sought after location
- Close to Brockwell Park
- Excellent transport links
- Furnished

Council tax band C    EPC rating D (68)



## Josephine Ave



Josephine Avenue, Brixton, SW2

