

Tremadoc Road, Clapham, SW4

2 bedroom flat - conversion for sale

£600,000

Share of Freehold

Property Details

A charmingly characterful, two double bedroom flat with a private garden, set within a grand double fronted Victorian property, perfectly positioned off Clapham High Street. A homely feel, ready to move into but with the potential to add your own mark over time. The reception is packed full of character with French doors leading to the garden, with ample space in which to relax and dine. Also enjoying access to the garden, the separate kitchen is spacious with an abundance of storage and worktop space. The private garden is a lovely spot, currently laid to patio for a low-maintenance finish, with the potential to landscape. The two bedrooms are located at opposing sides of the property, perfect for anyone looking to rent out a room. The bedrooms are well-proportioned doubles with high ceilings and wooden floor boards, the larger of the two boasting a pretty bay window. Neutrally presented, the bathroom is equipped with a bath and shower and benefits from a large window, finished with metro tiles and a heated towel rail. Of further benefit and not to be underestimated, there is plenty of storage on offer from the large cellar to the hallway cupboard and garden store. Early registration of interest is strongly advised.

Council tax band D EPC rating C (73)

Features

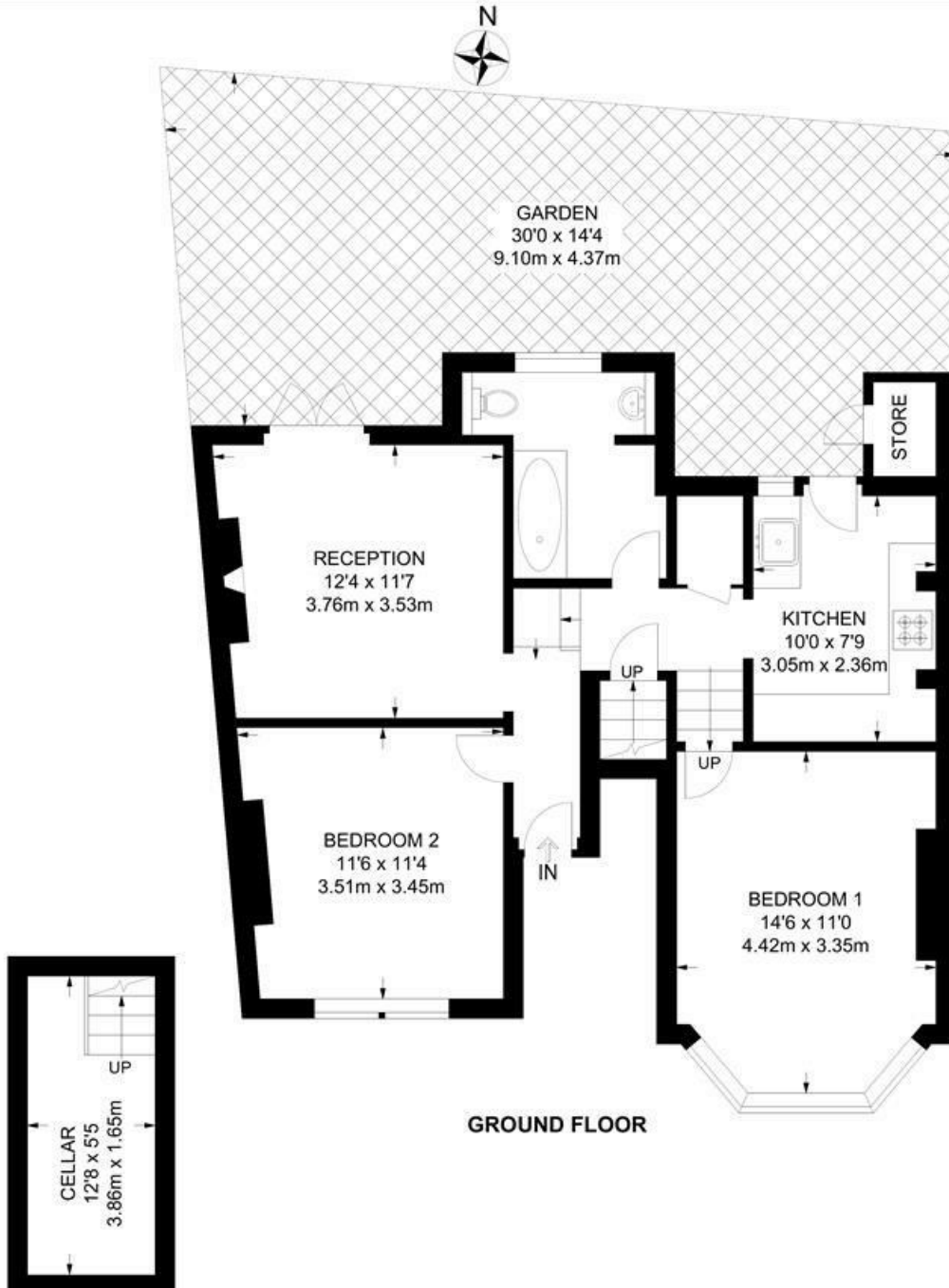
- Two double bedrooms
- Private garden
- Double fronted Victorian conversion
- Characterful features
- 748 square feet of internal space
- Popular road in central location
- Clapham High Street on the doorstep
- Clapham Common a short stroll away
- Easy access to the Northern and Victoria underground lines
- Chain-free



Tremadoc Road, Clapham, SW4

Tremadoc Road, SW4
2 Bedroom Flat

APPROXIMATE GROSS INTERNAL AREA WITH CELLAR: **748 SQ FT / 69.5 SQ M**
 APPROXIMATE GROSS INTERNAL AREA WITHOUT CELLAR: **679 SQ FT / 63.1 SQ M**



While we try our very best, floor plans are produced as a guide only and we take no responsibility for the precise accuracy with which any property is represented.

Tremadoc Road, Clapham, SW4

