

Wimbart Road, Brixton, SW2

1 bedroom flat - conversion for sale

£400,000

Share of Freehold

Property Details

Arranged over the ground floor of a Victorian end-of-terrace townhouse, this one bedroom garden flat is sure to appeal. The property offers great dimensions and a smart layout, perfectly positioned within close proximity to the wonderful greenery of Brockwell Park, and all that central Brixton and Herne Hill have to offer. Nestled behind large bay windows with plantation shutters, a welcoming reception room boasts high, corniced ceilings and space to lounge in front of the wood-burning stove. A double bedroom sits adjacent, peacefully overlooking the garden with a feature fireplace and built-in wardrobe. The kitchen boasts aesthetic appeal with homely country styling created by wooden work surfaces spanning shaker-style cabinetry, offset by a subtle flash of sage green tiling plus generous storage and a sociable banquette dining area. A neutral bathroom completes the interior of this charming property, furnished with both bath and shower and finished with a sleek white tile and trendy black touches. A low-maintenance garden is set to the rear, the ideal spot for hosting summer BBQs or occasionally catching up with a neighbour from the flat above who shares this leafy spot.

Council tax band C EPC rating D (61)

Features

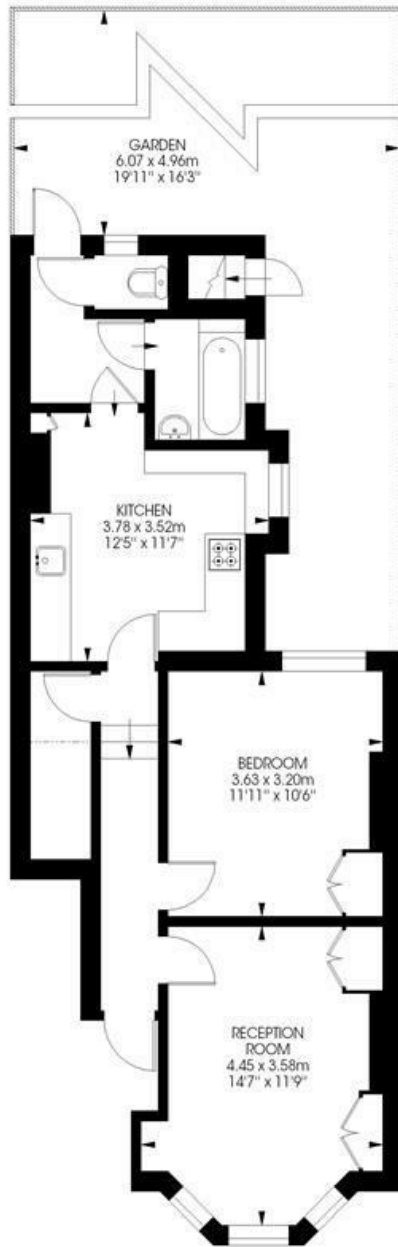
- One double bedroom
- South-East facing shared garden
- Victorian conversion
- Over 570 square feet of internal space
- Wood-burning stove
- Characterful features
- Local shops, cafes and pubs on doorstep
- Brixton a fifteen-minute stroll away or five-minute bus ride
- Brockwell Park and Herne Hill nearby
- Chain-free



Wimbart Road, Brixton, SW2

Wimbart Road, SW2
1 bedroom Flat

Approximate internal area: 571 sqft / 53 sqm



Ground Floor



While we try our very best, floor plans are produced as a guide only and we take no responsibility for the precise accuracy with which any property is represented.

Wimbart Road, Brixton, SW2

