

**Arodene Road, Brixton, SW2**

2 bedroom flat to let

**£480 Per Week**

Furnished

## Property Details

This large ground floor flat comprises a bright kitchen and reception room with direct access from the living room and kitchen to a sun trap of a garden - perfect for the upcoming summer. Two large double bedrooms share a sleek, modern bathroom, with one bedroom leading out to the outside area through double doors, and the other bedroom benefiting from a bay window. The property is located close to the lively Brixton town centre, alive with multiple genre's of music venues, an awesome culinary reputation and a plethora of excellent bars and pubs. Also nearby is Brockwell Park which offers an amazing view of London and many recreational activities such as basketball courts, a BMX track, tennis courts, a mini railway line and the tranquil ponds & walled garden. Brockwell Park also hosts a number of well known, popular festivals and events throughout the year.

**Council tax band C**      **EPC rating C (71)**

## Features

- Two double bedrooms
- Family sized bathroom
- Open plan reception and kitchen area
- Private garden
- Bright and airy throughout
- Close to transport links

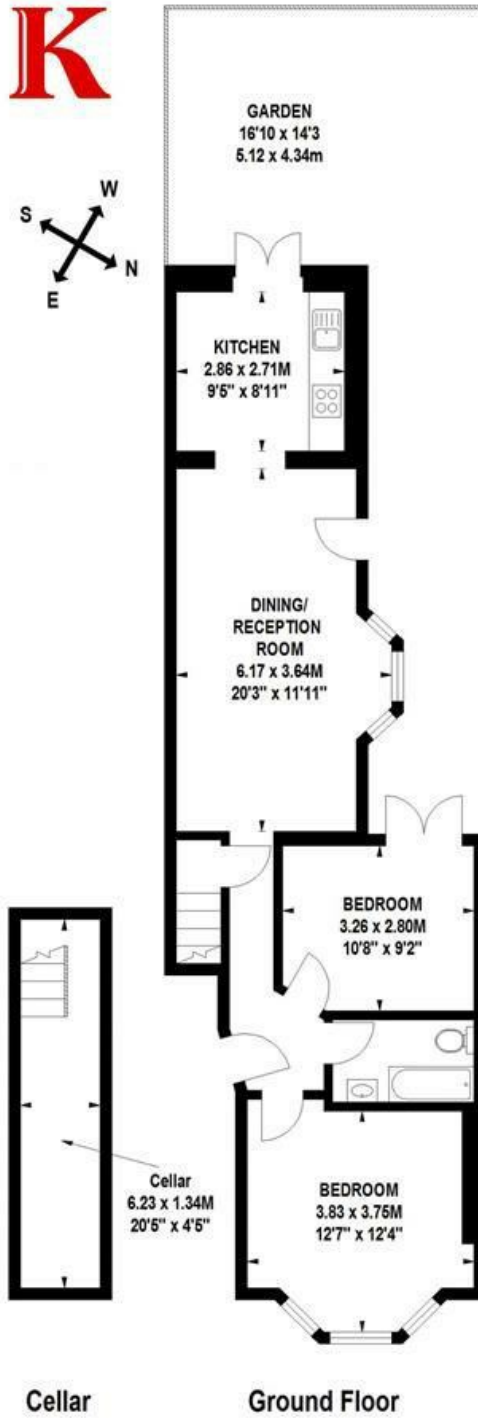




Arodene Road, Brixton, SW2

**Arodene Road, SW2**

Approximate gross internal area  
71 sq m / 764 sq ft



Floor Plan produced for Keating Estates by Mays Floorplans © . Tel 020 3397 4594  
Illustration for identification purposes only, not to scale  
All measurements are maximum, and include wardrobes and window bays where applicable



Arodene Road, Brixton, SW2

