

**Howletts Road, SE24**

2 bedroom flat to let

**£420 Per Week**

Furnished

## Property Details

A charming two double bedroom top floor flat located in walking distance of the wonderful greenery of Brockwell Park. The flat has a spacious open plan kitchen/living room with hardwood flooring and multiple large windows allowing a vast amount of natural light into the room. The kitchen is fully integrated and includes granite worktops. There are also two double bedrooms, one with its own en suite shower room, and a family bathroom. The flat is only a short walk to three different train stations linking you to London Bridge quickly.

## Features

- Two double bedrooms
- One family bathroom and one en suite
- Open plan reception and kitchen
- Bright and airy
- Hardwood flooring
- Easy access to transport links
- Close to Brockwell Park

Council tax band C    EPC rating E (50)





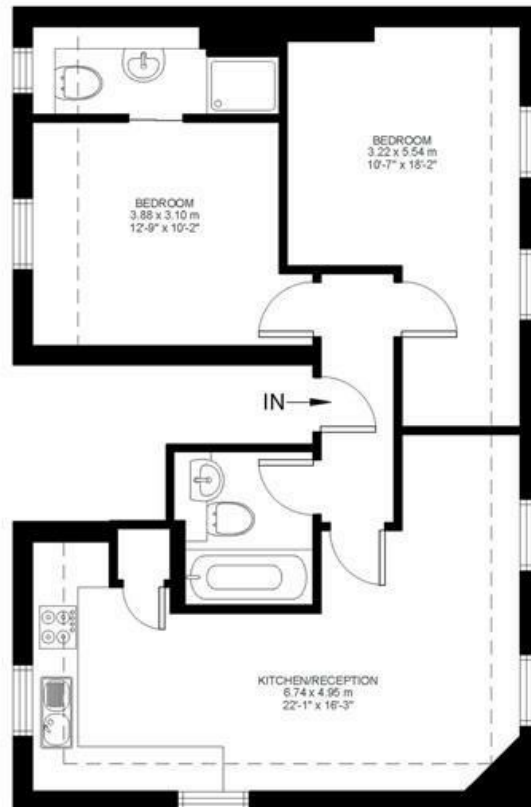
## Howletts Road

2 Bed flat

Approx internal area:

**691 sqft 64 sqm**

While we do try our very best, floor plans are produced as a guide only and we take no responsibility for the precise accuracy with which any property is represented



Third Floor



Howletts Road, SE24

