



Bicycle Mews, Clapham, SW4

2 bedroom flat - purpose built for sale

£550,000

Leasehold

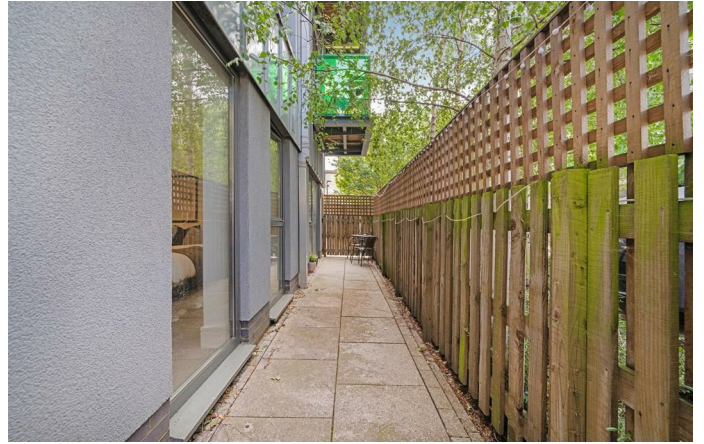
Property Details

A two double bedroom, two bathroom apartment with a private South-West facing garden terrace, in a modern building, tucked away in an enviable location at the heart of Clapham. Set quietly to the rear, the heart of this home is the open plan reception, this sociable space measures over seven meters and offers room to lounge, dine and cook. The contemporary integrated kitchen boasts generous storage, and worktops that wrap around into a breakfast bar. The lounge opens out onto a private garden terrace, a low-maintenance outside space in which to dine al-fresco or unwind. Both bedrooms are generous doubles with fitted mirrored wardrobes, one boasts a modern en-suite shower room whilst the other has views over the garden terrace. The main bathroom is equipped with both shower and bath for those moments a relaxing soak in the tub is desired. With hallway storage, underfloor heating and high energy efficiency this apartment would make a fantastic home. Further benefits include secure shared bike storage, and a large communal roof terrace offering panoramic views of the London Skyline.

Features

- Two double bedrooms
- Two bathrooms
- Private garden terrace
- Secure modern building
- Large communal terrace with panoramic views
- Vast array of bars, cafes and eateries on the doorstep
- Moments from the Northern Line and Overground
- Close to the green open spaces of Clapham Common
- Chain-free

Council tax band E EPC rating B (82)

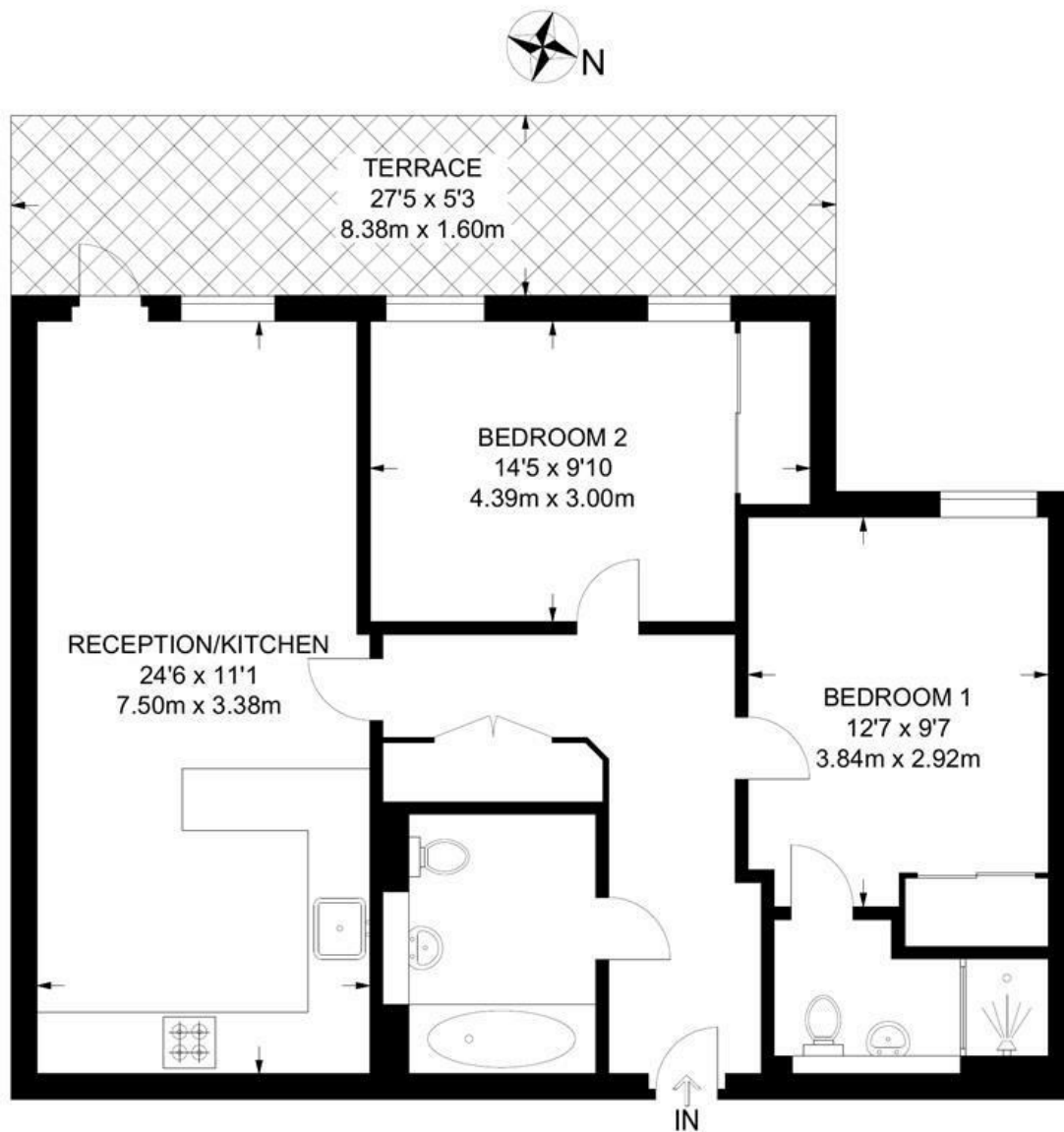




Bicycle Mews, Clapham, SW4

Bicycle Mews, SW4
2 Bedroom Flat

APPROXIMATE GROSS INTERNAL AREA: **758 SQ FT / 70.4 SQ M**



GROUND FLOOR



While we try our very best, floor plans are produced as a guide only and we take no responsibility for the precise accuracy with which any property is represented.

Bicycle Mews, Clapham, SW4

