



Holmewood Gardens, Brixton, SW2

1 bedroom flat - conversion to let

£392 Per Week

Furnished

Property Details

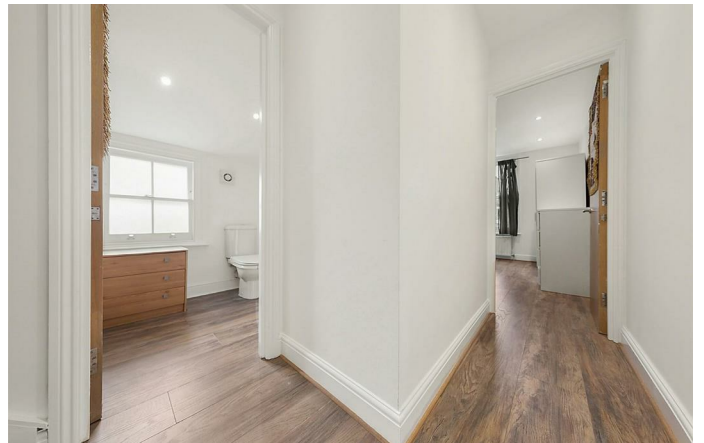
A delightful one bedroom flat, arranged securely over the top floor of an end-of-terrace Victorian townhouse, boasting a handsome façade and enviable location on the highly sought-after Holmewood Gardens. Just a short stroll from Brixton Hill, Holmewood Gardens is a quiet residential street that surrounds a pretty garden square and is within a fifteen to seventeen-minute walk to Brixton town centre, or a few minutes if you were to jump on one of the many buses that flow down Brixton Hill. The area is also ideal for anyone with a car, with quick easy access to the South Circular, as well as plenty of residents' permit parking available directly outside the property.

The property has been beautifully presented by the current owner, with a mix of endearing character and sleek, up-to-date finishes. The stunning open plan reception offers a stylish integrated kitchen and is flooded with light through multiple Velux windows. The flat has a lovely, bright atmosphere and pretty views over the garden square that the road wraps around. A modern and well-equipped bathroom follows on, with access to significant eaves storage. The flat is completed by a spacious double bedroom, peacefully located at the rear of the house overlooking the neighbouring gardens below.

Features

- Double bedroom
- Open plan reception
- Modern
- Bright and airy
- Victorian conversion
- Close to transport links

Council tax band C EPC rating C (79)



Holmewood Gardens, Brixton, SW2

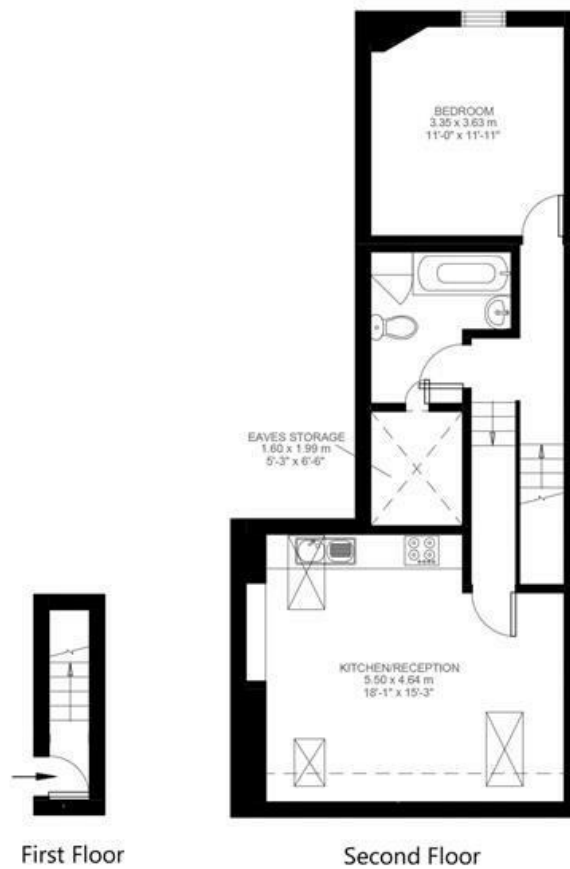
Holmewood Gardens, Brixton, SW2

1 Bedroom Flat

Approximate internal area: **558 sqft 52 sqm**

Approximate eaves storage: **34 sqft 3 sqm**

Approximate total internal area: **55 sqm 594 sqft**



While we do try our very best, floor plans are produced as a guide only and we take no responsibility for the precise accuracy with which any property is represented.

Holmewood Gardens, Brixton, SW2

