



Coldharbour Lane, Brixton, SW9

1 bedroom flat - purpose built for sale

£425,000

Leasehold

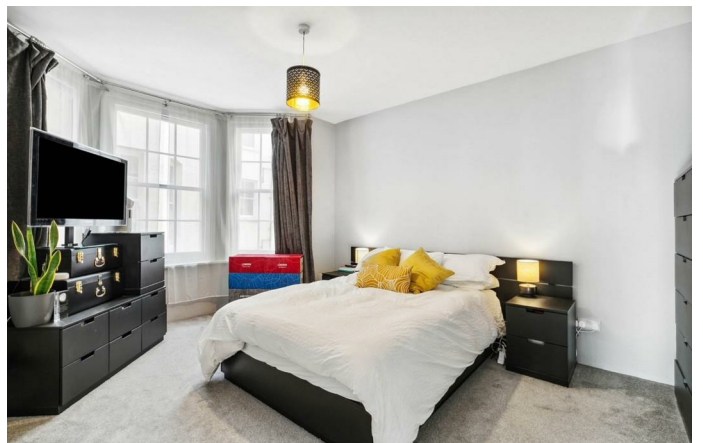
Property Details

The apartment comprises a substantial and appealing open-plan reception, flooded with natural light and complete with a charming feature fireplace. The sleek modern kitchen is generous and provides abundant storage options with ample surface space. Dimensions allow for comfortable dining as well as a lounge area, the room is ideal for entertaining and hosting as well as relaxing and unwinding. With almost 700 square feet of internal space, this one bedroom flat offers a similar footprint to many two beds in the building, which have sold at a higher premium. The bedroom is beautifully lit thanks to a large bay window and provides plenty of space for storage options, adjacent a contemporary family sized bathroom completes the flat.

Features

- One double bedroom
- Easily convertible into a 2 bed STNP
- Stunning rooftop garden
- Victorian mansion block
- Almost 700 square feet of internal space
- Bright and characterful
- Local amenities of central Brixton
- Victoria Line in minutes
- Brockwell Park in 15 minutes
- Chain-free

Council tax band EPC rating C (70)

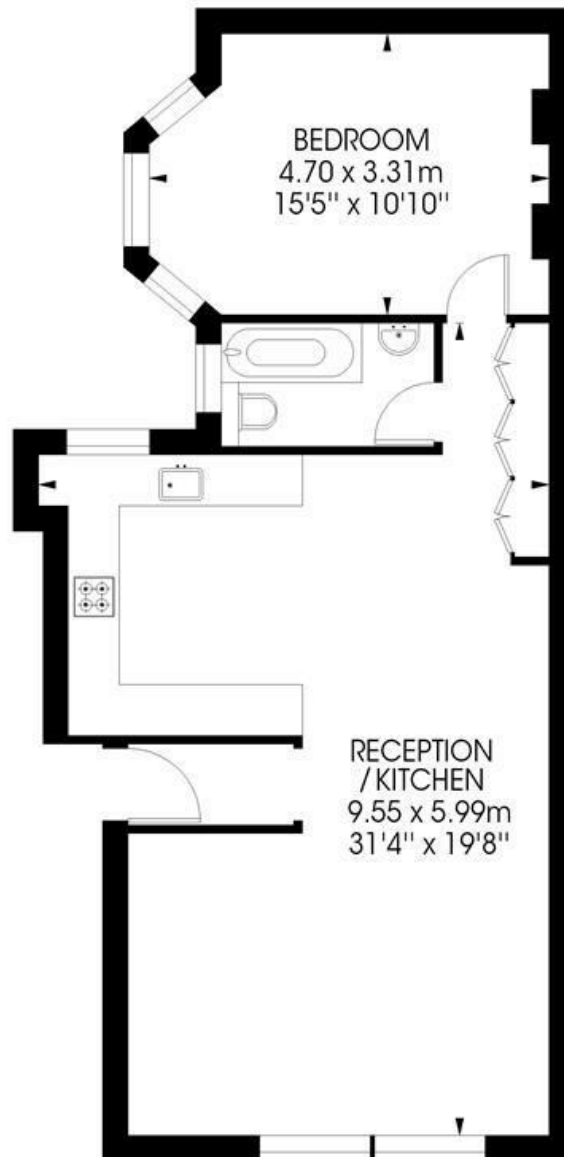




Coldharbour Lane, Brixton, SW9

Connaught Mansions,
Coldharbour Lane Brixton, SW9
1 bedroom flat

Approximate internal area: **678 sqft / 63 sqm**



Second Floor



While we try our very best, floor plans are produced as a guide only and we take no responsibility for the precise accuracy with which any property is represented.

Coldharbour Lane, Brixton, SW9

